

Drum Chipper



Drum Chipper – Machine versions

Type of machine	Cross section of chippers mm	Diameter of rotor mm	Number of knives	Driving power appr. kW	Feeding Rolls		Power		Machines weight appr. kg
					upper	lower	rm/h ¹⁾	t oven dry /h ²⁾ ca.	
MT 185	185 x 700	650	2 - 4	55	1	2	24 - 36	8 - 12	4.350
MT 225	225 x 700	750	2 - 4	90	2	2	30 - 45	10 - 15	6.350
MT 325	325 x 650	1.100	2 - 4	160	3	4	40 - 60	13 - 20	9.000
MT 425	425 x 850	1.400	2 - 4	315	4	4 + 1	70 - 104	23 - 35	14.000
MT 525	525 x 1.050	1.700	3 - 6	500	5	6 + 1	105 - 157	35 - 52	24.000
MT 725	725 x 1.450	2.000	4 – 8	1500	9	10 + 1	170 - 256	56 - 85	90.000

1) Filling amount 10-15% Feeding rate 30 m/min

2) rm ≈ 330 kg oven dry

Drum Chipper – MT 185

chipping cross section **185** * **700**

rotor

diameter	650	mm
speed	663	U/min
cutting speed	22,6	m/sec
cutting width		mm
weight		kg

driving power

rotor	55	kW
wood feeding	2 *	3 kW
total	61	kW

pulley Ø

motor	250	mm
rotor	560	mm

distance between axes

feeding rolls

upper	1 pcs.
lower	2 pcs.
Ø	396 mm

clearing roll Ø 116 mm
 feeding speed **30** m/min

capacity

feed	23,3 rm/h
oven dried	7,8 t/h

number of knives 1 - 2 Stück

chipping length **24** mm

weight 4.350 kg



Drum Chipper – MT 225

chipping cross section 225 * 700

rotor

diameter	750	mm
speed	658	U/min
cutting speed	25,8	m/sec
cutting width		mm
weight		kg

driving power

rotor	90	kW
wood feeding	2 *	4 kW
total	98	kW

pulley Ø

motor	280	mm
rotor	630	mm

distance between axes

feeding rolls

upper	2 Stück
lower	2 Stück
Ø	318 mm

clearing roll Ø

116 mm

feeding speed

30 m/min

capacity

feed	28,4 rm/h
oven dried	9,5 t/h

number of knives

1 - 2 Stück

chipping length

24 mm

weight

6.350 kg

Drum Chipper – MT 325

chipping cross section 325 * 650

rotor

diameter	1100	mm
speed	498	U/min
cutting speed	28,7	m/sec
cutting width	780	mm
weight	1250	kg

driving power

rotor	160	kW
wood feeding	2 * 7,5	kW
total	175	kW

pulley Ø

motor	325	mm
rotor	1000	mm

distance between axes

feeding rolls

upper	2 Stück
lower	2 Stück
Ø	318 mm

clearing roll Ø 116 mm
 feeding speed 30 m/min

capacity

feed	38,0	rm/h
oven dried	12,7	t/h

number of knives 2 - 3 Stück

chipping length 24 mm

weight 6.350 kg



Drum Chipper – MT 425

chipping cross section 425 * 850

rotor

diameter	1400	mm
speed	340	U/min
cutting speed	24,9	m/sec
cutting width		mm
weight		kg

driving power

rotor	315	kW
wood feeding	2 * 15	kW
total	345	kW

pulley Ø

motor	400	mm
rotor	1.250	mm

distance between axes

feeding rolls

upper	4 Stück
lower	4 Stück
Ø	318 mm

clearing roll Ø 116 mm
 feeding speed 30 m/min

capacity

feed	65,0 rm/h
oven dried	21,7 t/h

number of knives 3 - 4 Stück
 chipping length 24 mm

weight 14.000 kg

Drum Chipper – MT 525

chipping cross section **525** * **1050**

rotor

diameter	1700	mm
speed	319	U/min
cutting speed	28,4	m/sec
cutting width	1350	mm
weight	4800	kg

driving power

rotor	500	kW
wood feeding	2 *	15 kW
total	530	kW

pulley Ø

motor	400	mm
rotor	1400	mm

distance between axes

feeding rolls

upper	5 Stück
lower	6 Stück
Ø	318 mm

clearing roll Ø

116 mm

feeding speed

30 m/min

capacity

feed	99,2 m ³ /h
oven dried	33,1 t/h

number of knives

3 - 4 Stück

chipping length

24 mm

weight

24.000 kg

Drum Chipper – MT 725

chipping cross section 725 * 1450

rotor

diameter	2000	mm
speed	290	U/min
cutting speed	30,35	m/sec
cutting width	1400	mm
weight	17.000	kg

driving power

rotor	800 - 1500	kW
wood feeding	2 * 22	kW
total		kW

pulley Ø

motor	585	mm
rotor	2000	mm

distance between axes

feeding rolls

upper	9 Stück
lower	10 Stück
Ø	396 mm

clearing roll Ø

156 mm

feeding speed

30 m/min

capacity

feed	189,2	rm/h
oven dried	63,1	t/h

number of knives

4 - 5 Stück

chipping length

24 mm

weight

90.000 kg

Drum Chipper – Raw material and final product



billets



slabs



log ends



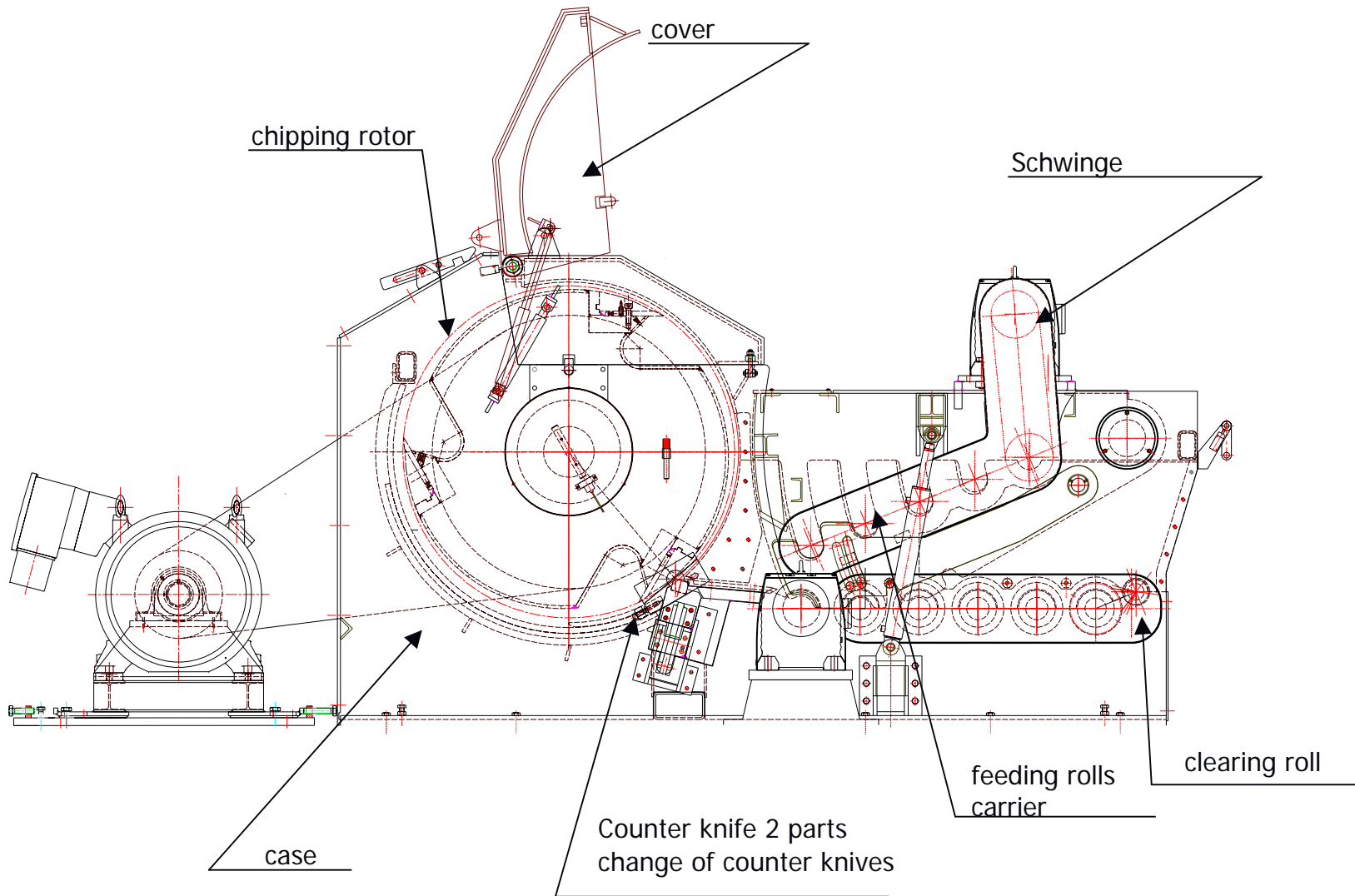
edgings



High quality chips because of innovative technique

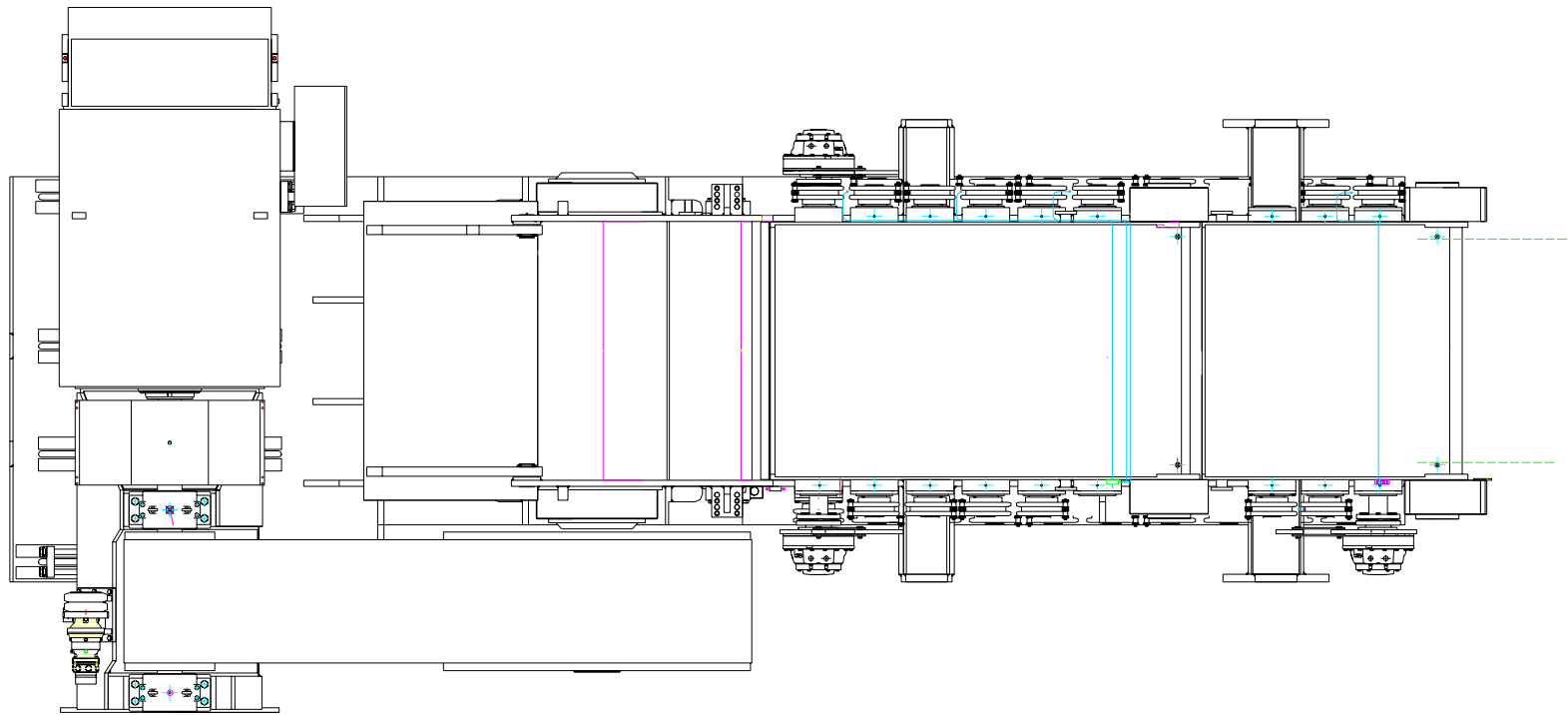
Drum Chipper – Drawing

(depending on the type of the machine, here: MT 525)

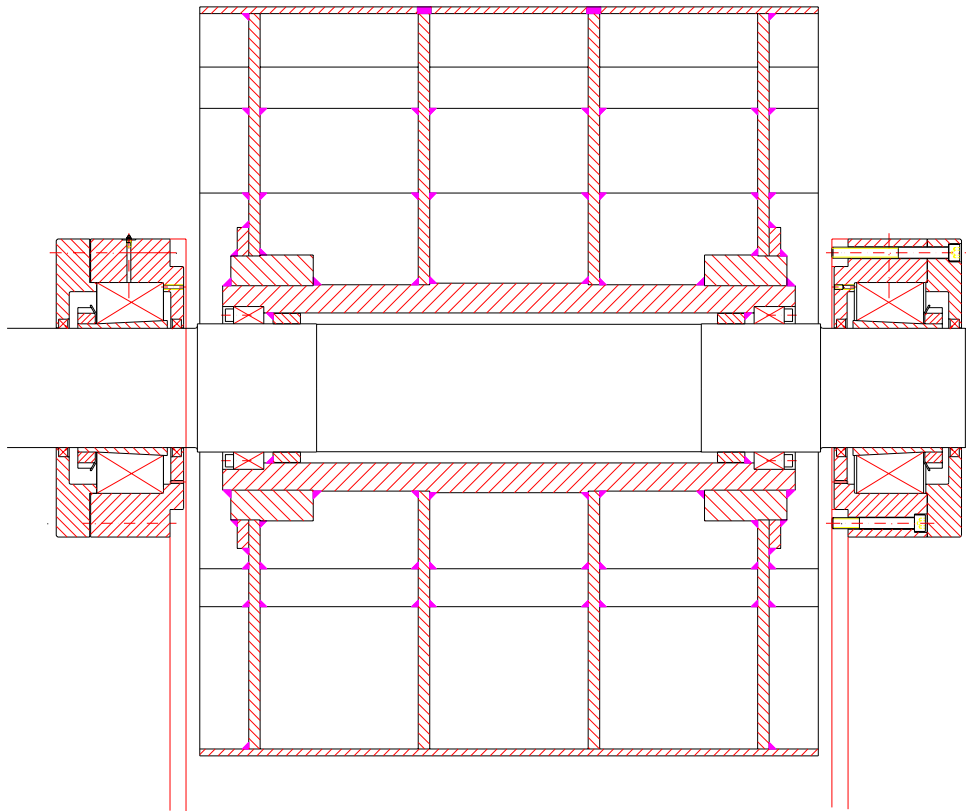


Drum Chipper – Top view

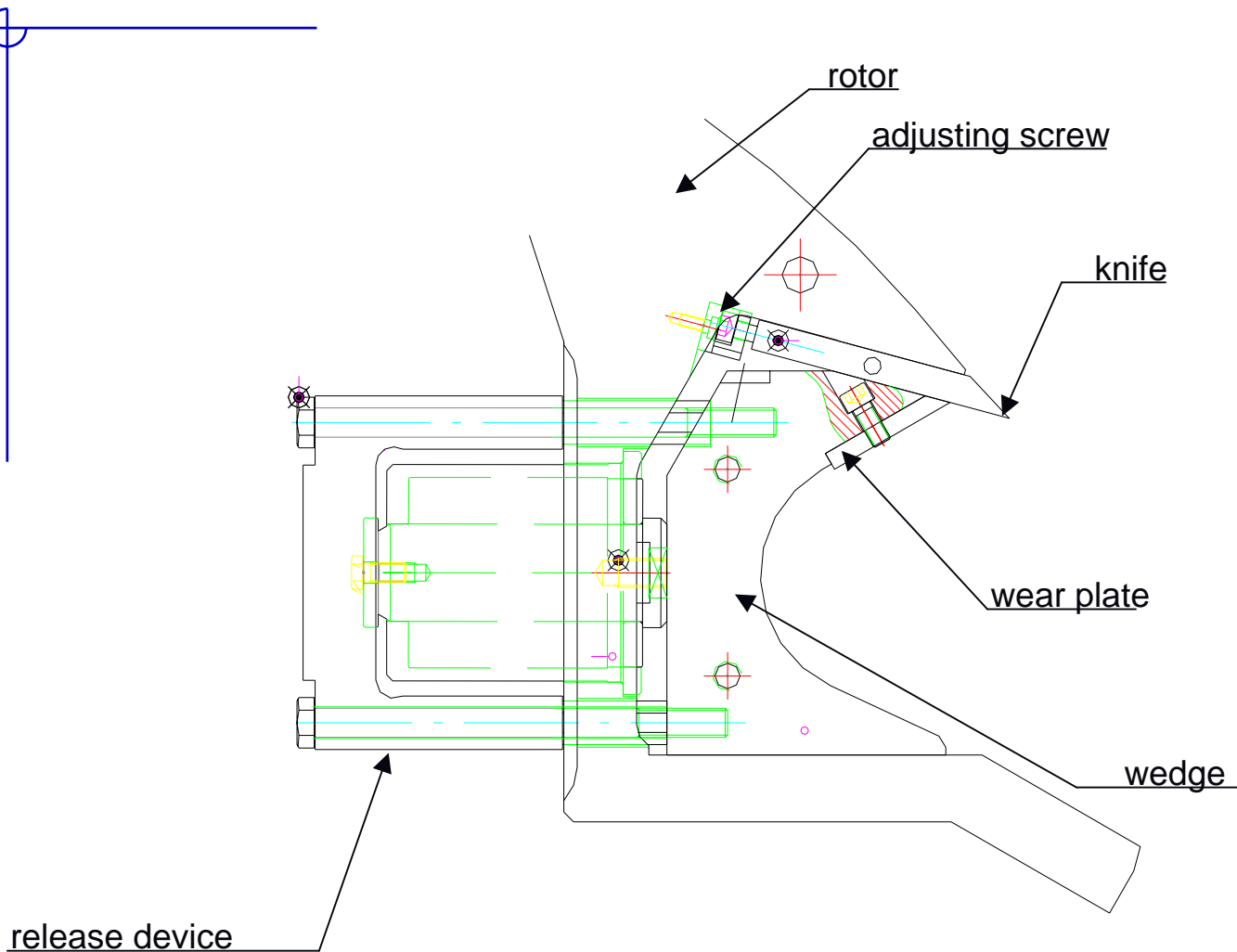
(depending on the type of the machine, here: MT 725)



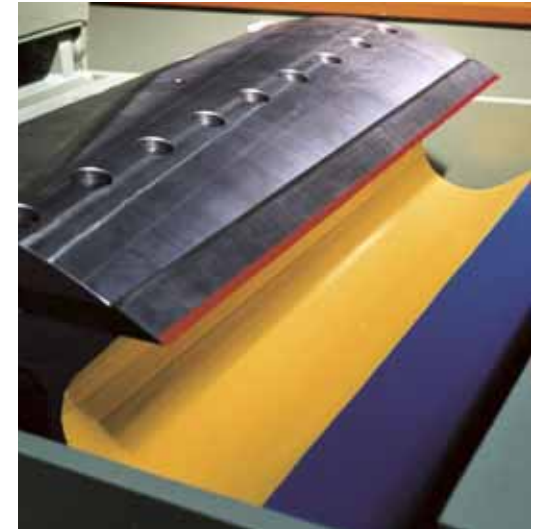
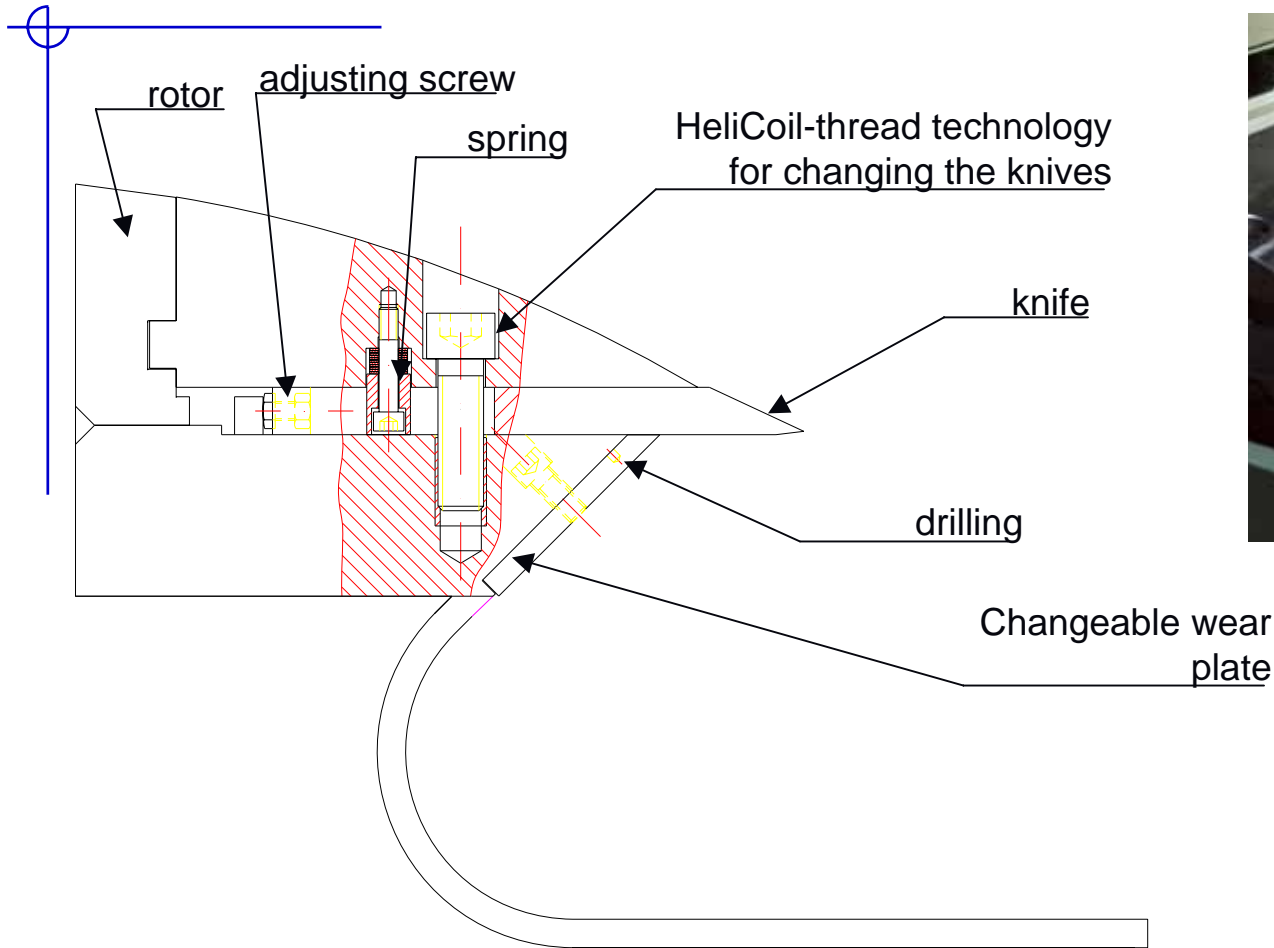
Drum Chipper – Cross section of chipping rotor



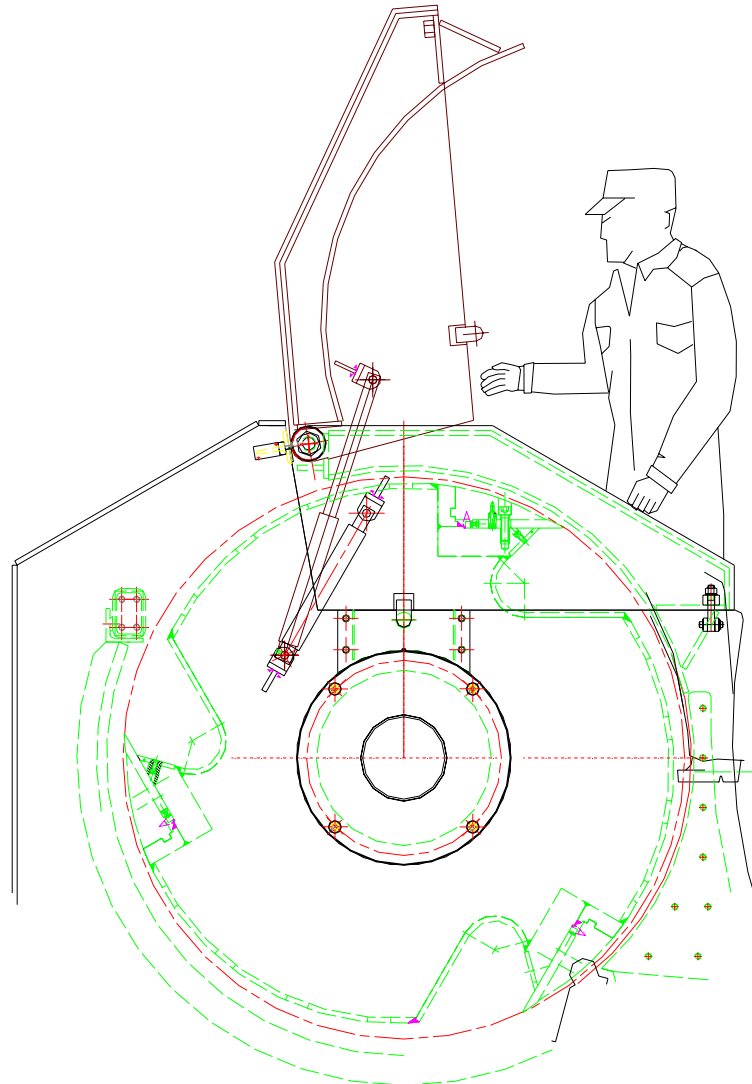
Drum Chipper – Wedge



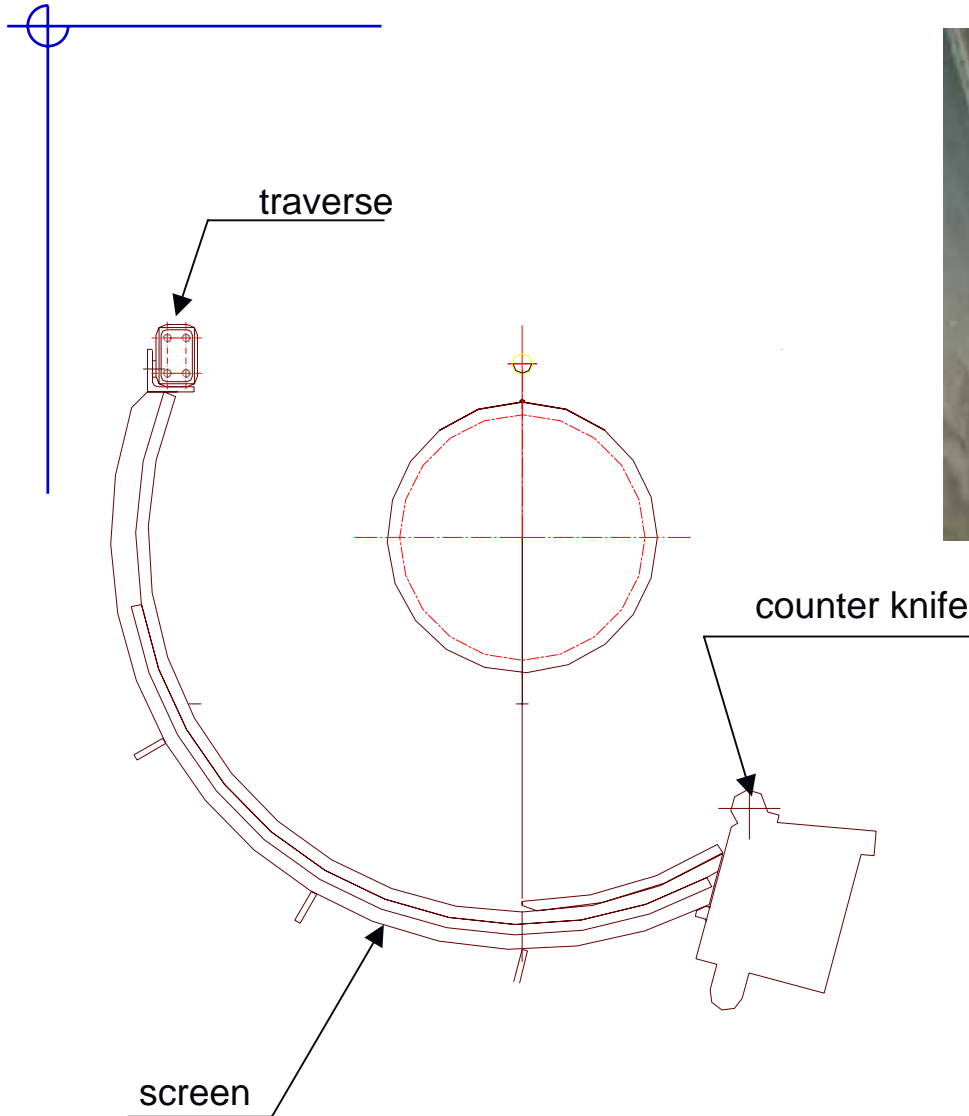
Drum Chipper– Clamping plate



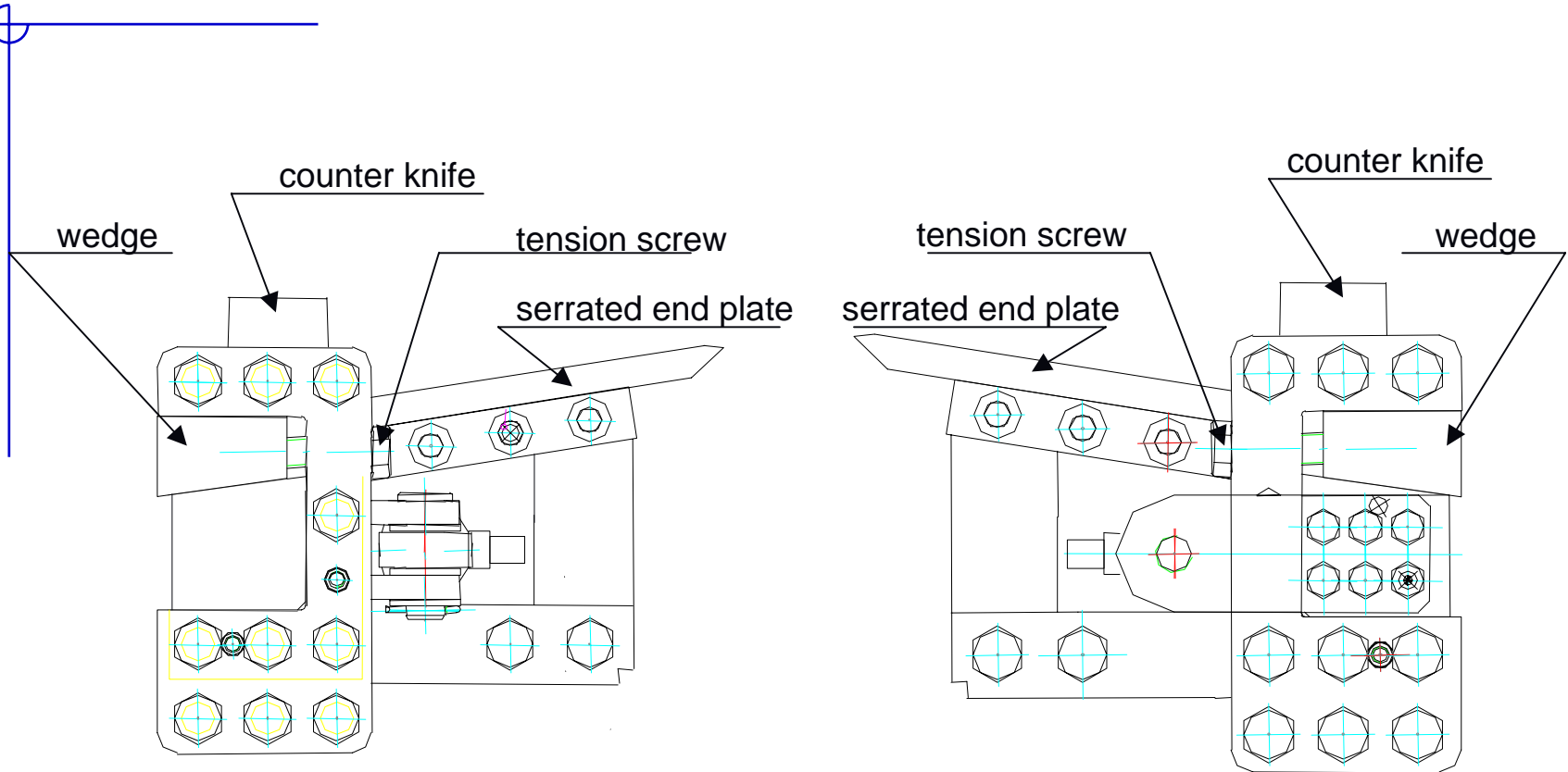
Drum Chipper – Cover



Drum Chipper – Screen



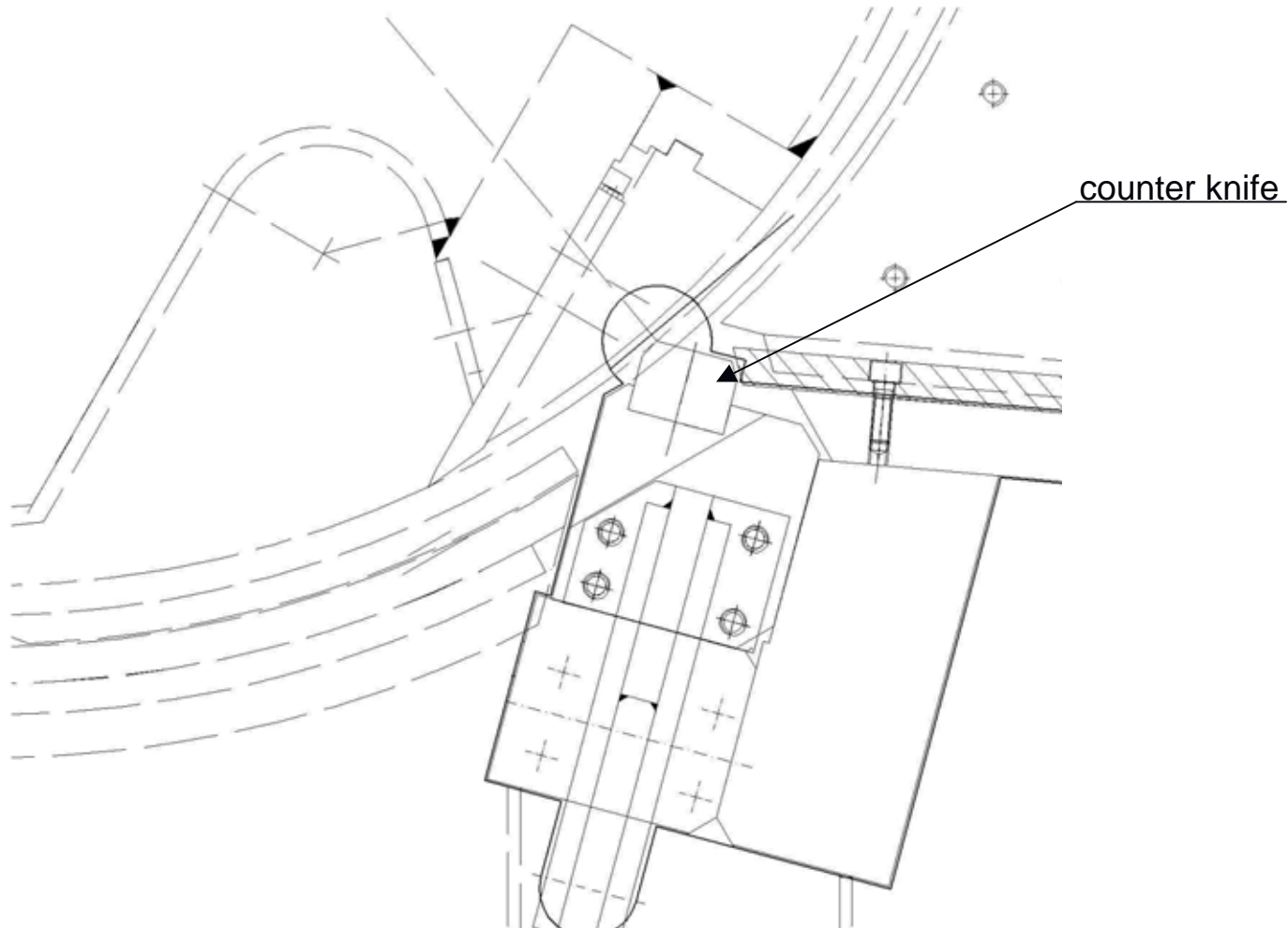
Drum Chipper – Counter knife, 2 parts



counter knife (left view)

counter knife (right view)

Drum Chipper – Position of counter knife

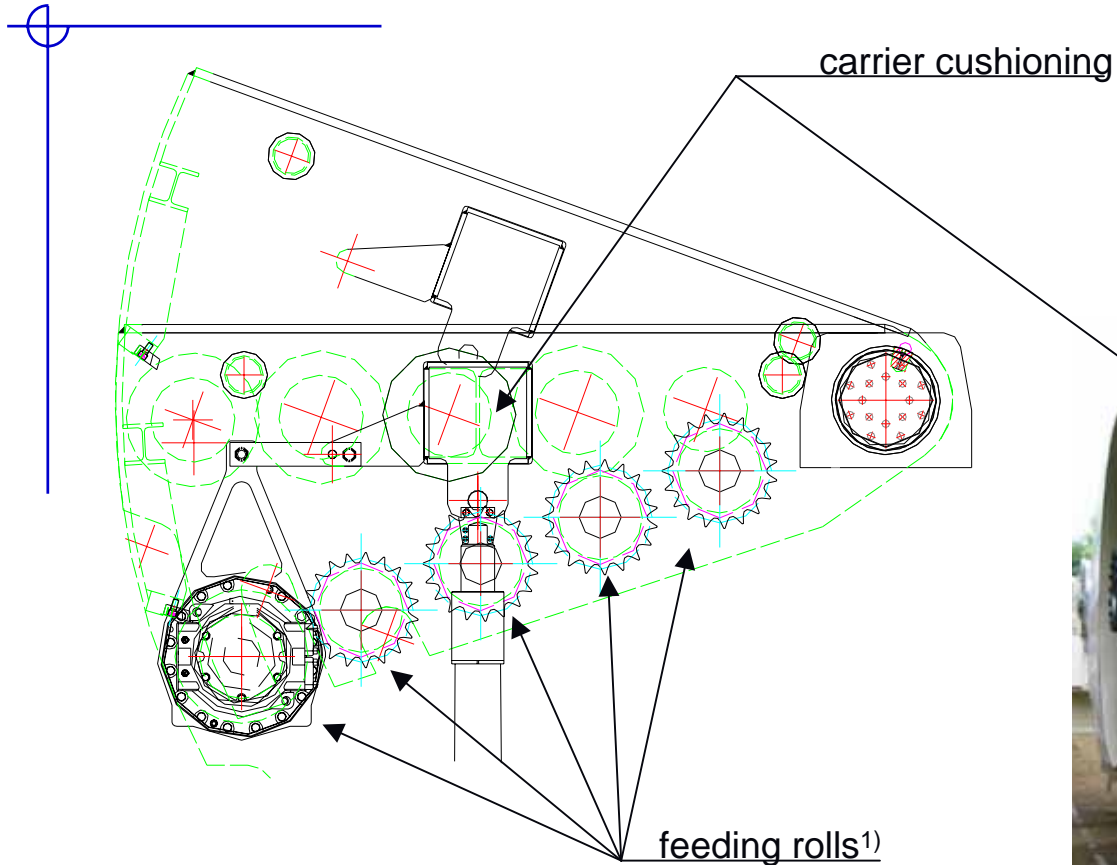


Drum Chipper – Change of counter knife



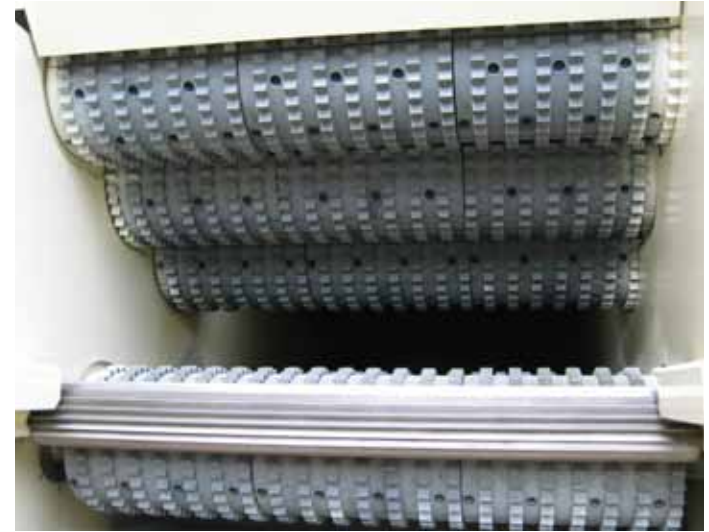
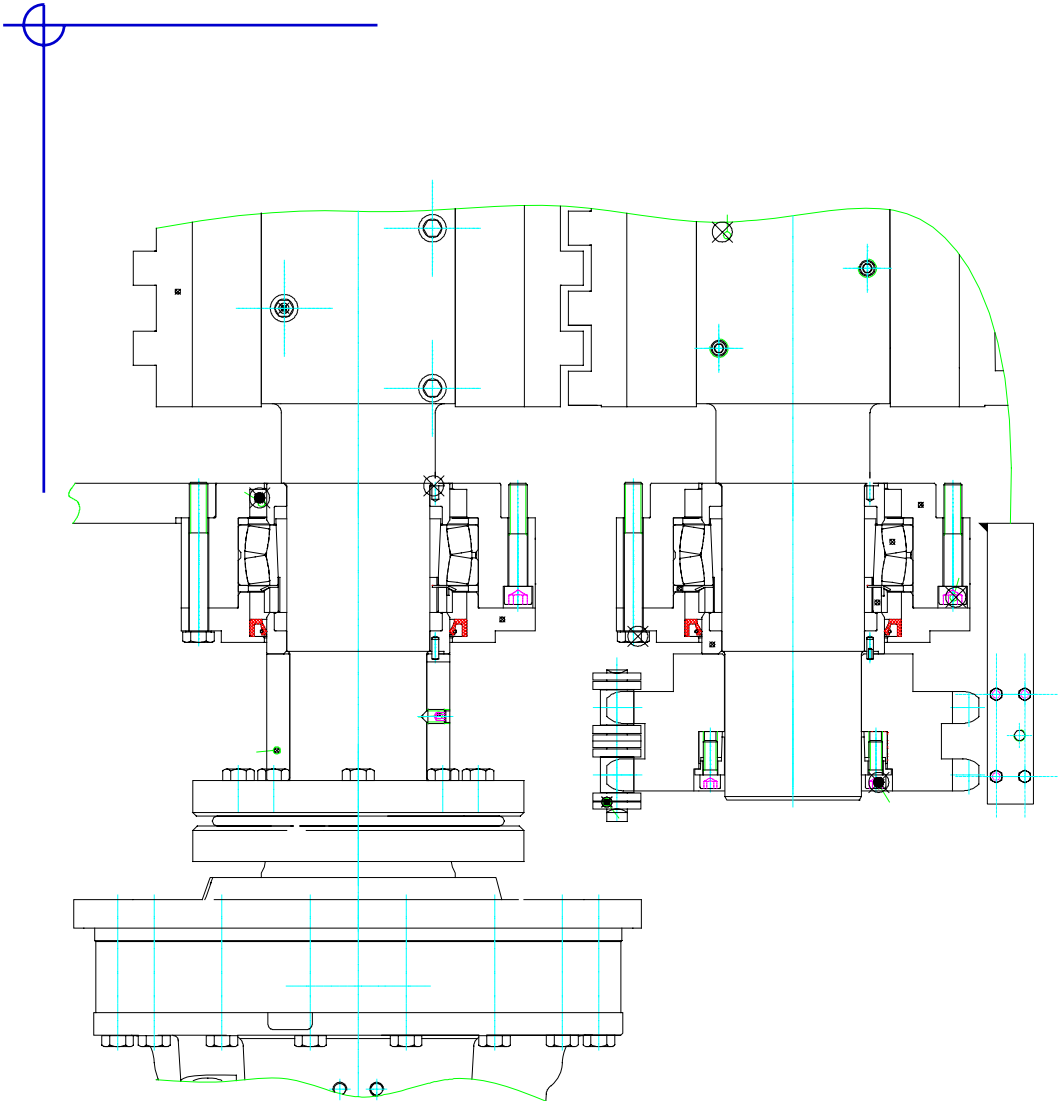
counter knife

Drum Chipper – Feeding rolls carrier

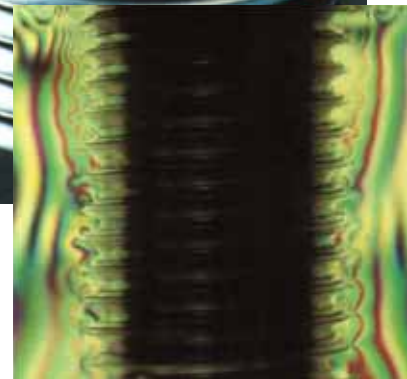


1) Amount of rolls depends on the type of the machine

Drum Chipper – Driving of the rolls



Drum Chipper – HeliCoil thread technology



Usual construction style:
Uneven weight and
tension distribution

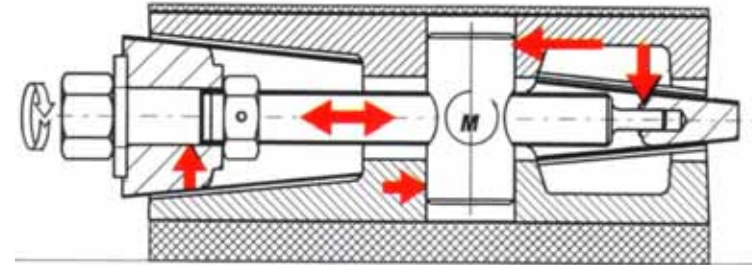


HeliCoil-technology:
Even weight and
tension distribution

Drum Chipper – Universal machine-shoes

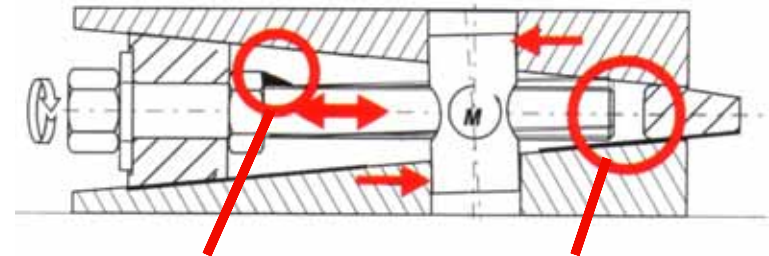


Isolec technique:



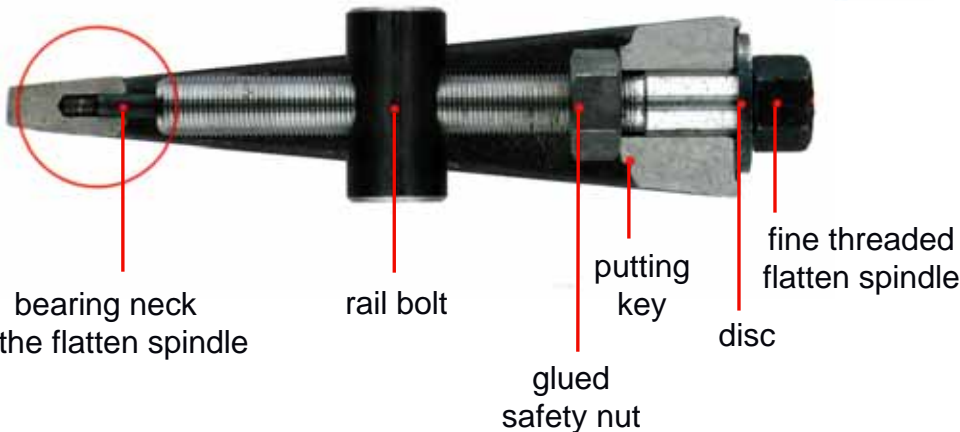
Fast and precise adjusting – shorten mounting; thereby max. stability through tangential power. Vibration will be caught and therefore not transmitted into foundation.

Usual construction style:



stretched spindle due to thermic tensions as a result of welding

no counter bearing of the spindle end. Spindle will be squeezed out of middle axes



Drum Chipper – Your advantages

- **Chipping-width bigger than infeed width**
- **Regrinding traverse** suited at the end of the screen
- Screening area compared to infeed diameter **extremely enlarged**
- **Rotor shape adjusted** to the chipping length
- **Changeable wear plate** beneath the chipping knives
- **High quality chips** due to optimal chipping geometry and improved material infeed
- **Chipping of all kinds** of wood
- **Chips production** after strict claims

Drum Chipper – Your advantages

- **Knife clamping** electively with hydraulic operating wedge or mechanical clamping plate
- **Feeding of the drum chipper** possible with feeding belt, vibrating trough or steel plate belts
- **Transport of chips** through screw conveyor, conveyer belt, chain conveyor or pneumatic
- **Motor console** integrated in machine case
- **Flat belt drive**
- **Low noise generation**
- **Spread worldwide and proved since decades for full satisfaction of our clients**

Drum Chipper – Your advantages

- **Low wear out** of the feeding rolls
- **Easy changeable** wear parts
- **Even, one-parted main shaft** for fasten the rotor with tension elements
- **Continuous and economical** working procedure
- **Lateral sealing** of the front feeding roll carriers for dust protection
- **Low maintenance costs**
- **Trouble free infeed** and secure locking of the material by two individual feeding rolls carriers
- **Easy changeable chipping- and counter knife**

Drum Chipper – Your advantages

- **Manual or electro-hydraulic** counter knife discharge
- **Counter knife with two edges and regrindable**
- Screen out of **massive rolled steel plates**
- **No personal** required during operation
- HeliCoil technology for optimal gripping power of screws; threads are replaceable
- **Installation of the drum chipper on vibration cushioning elements**

Contact

Maschinen- und Anlagenbau GmbH

Sandweg 2 – 6

D-55543 Bad Kreuznach

P.O. Box 16 61

D-55506 Bad Kreuznach

Ph.: +49 (6 71) 7 07-0

Fax: +49 (6 71) 7 07-67

E-Mail: info@hombak.de

Homepage: www.hombak.de