

Butt End Equaliser

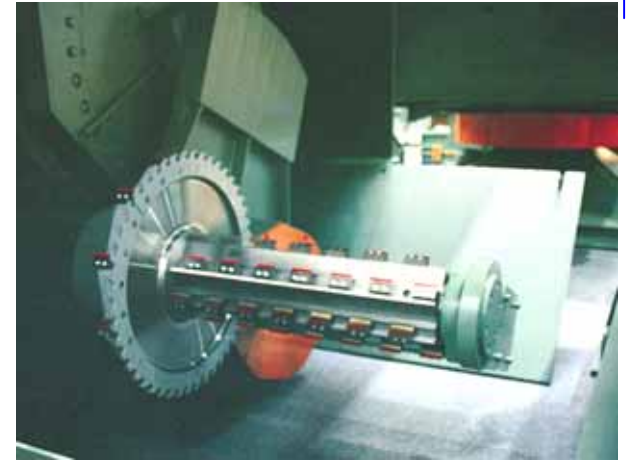
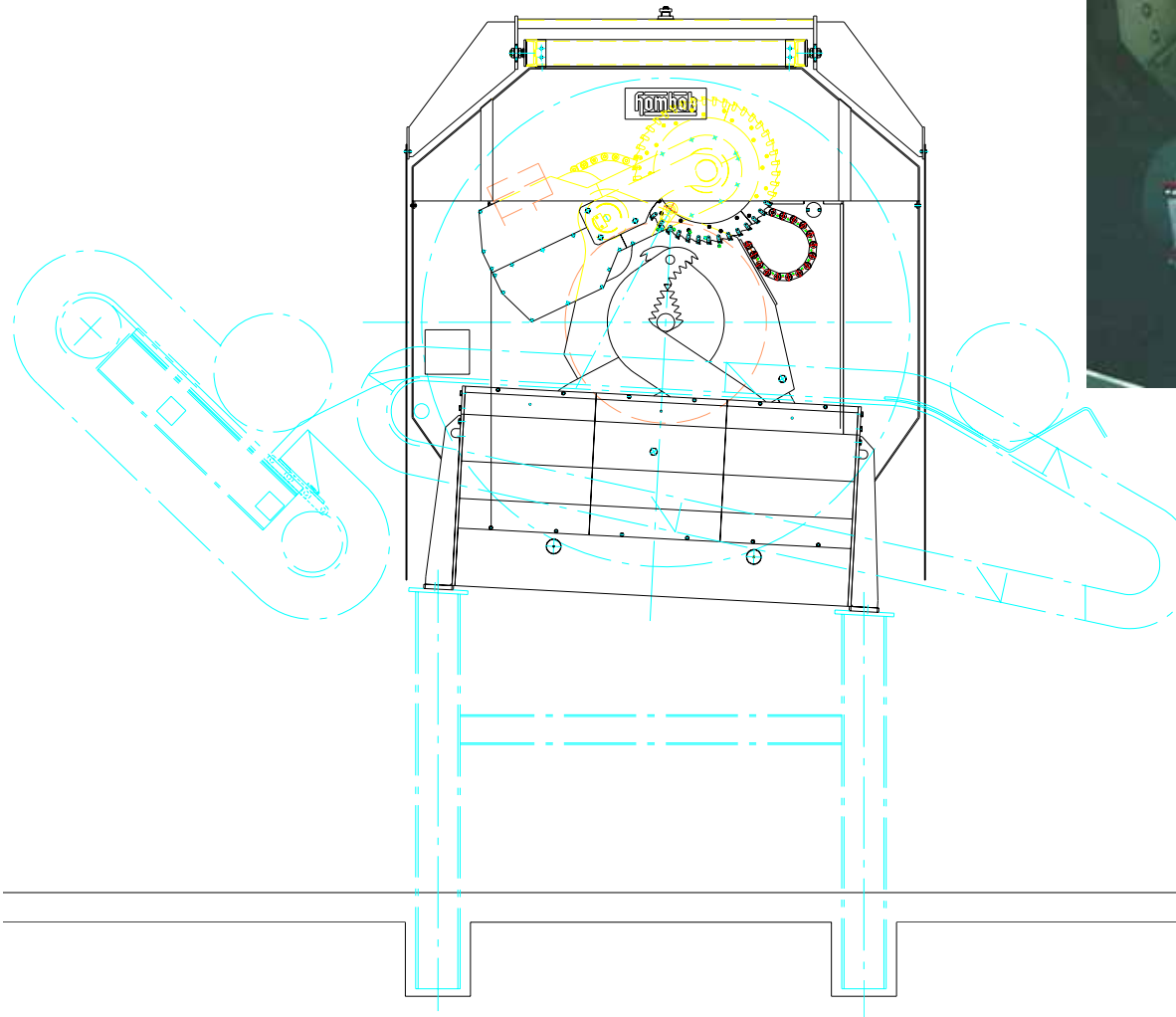


Butt End Equaliser – Machine versions

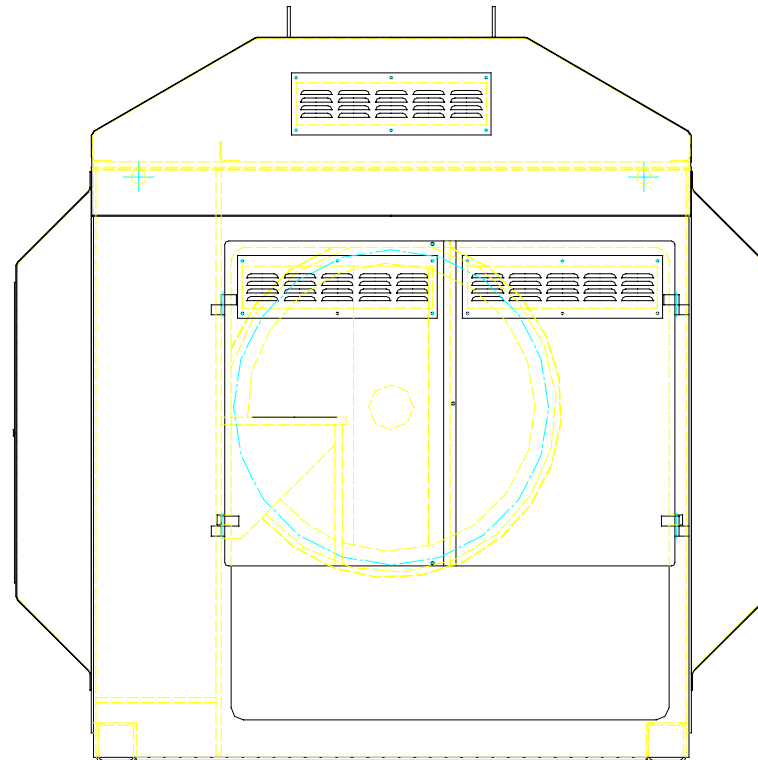
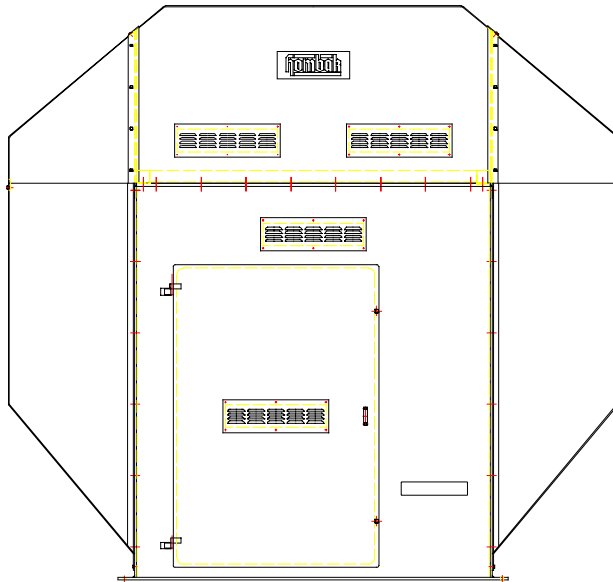
Type of machine	Cycle time at CHD (chest height diameter)	Max. log length	Min. log length	No. of knives Cutterhead w/o polling disk	No. of knives polling disk	Installed power
ME K 400/300/960	9	4.000	2.500	36	-	66,0
ME SR 1.000/800/960	14	unlimited	2.500	48	12	68,5
ME SR 1.000/800/1.200	14	unlimited	2.500	60	12	68,5
ME SR 1.200/900/960	15	unlimited	3.000	48	12	104,5
ME SR 1.200/900/1.200	15	unlimited	3.000	60	12	104,5
ME SR 1.400/900/1.200	16	unlimited	4.000	60	12	148,5

Butt End Equaliser – MESR

(Front view)

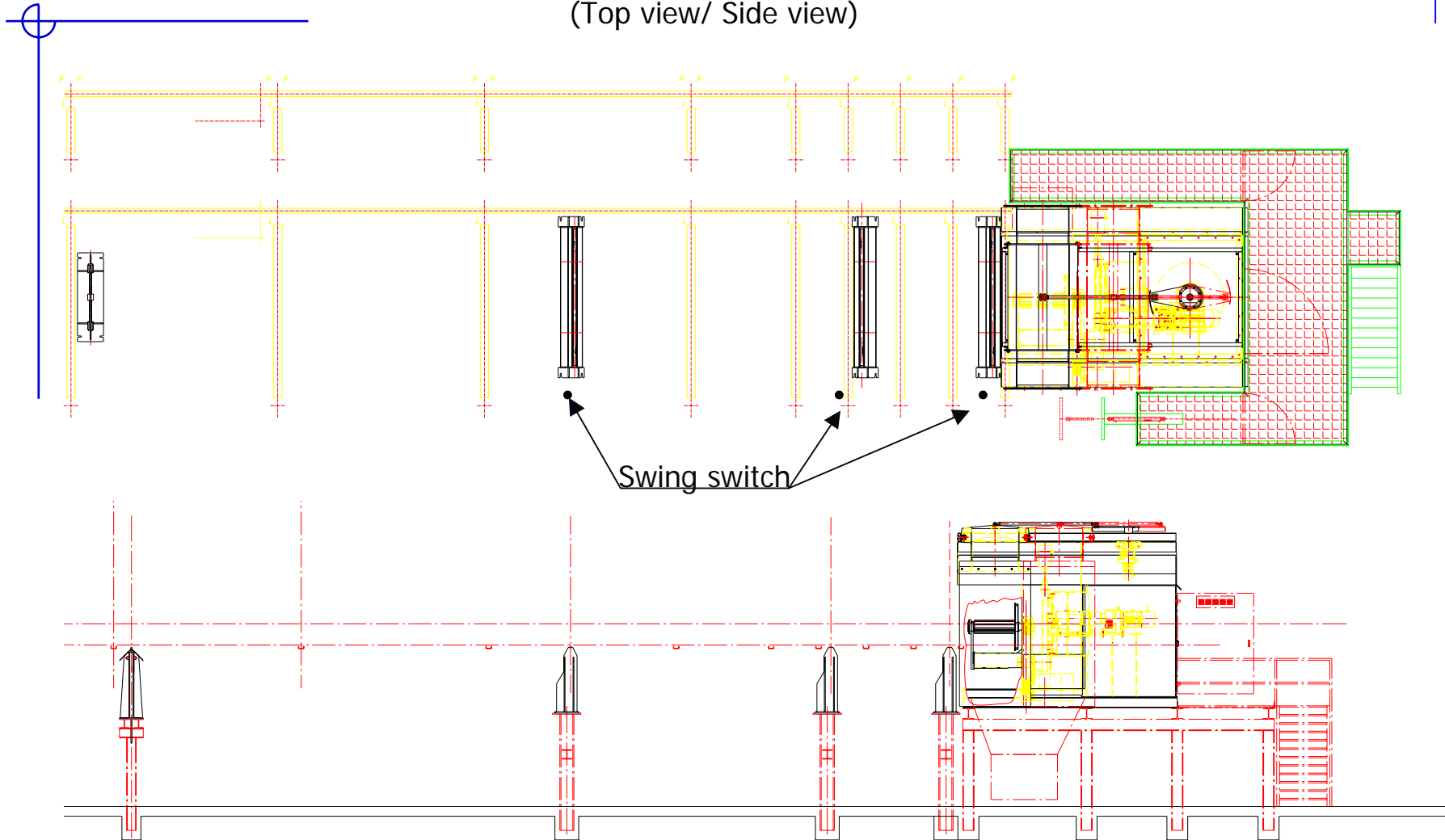


Butt End Equaliser – MESR (Rear wall)

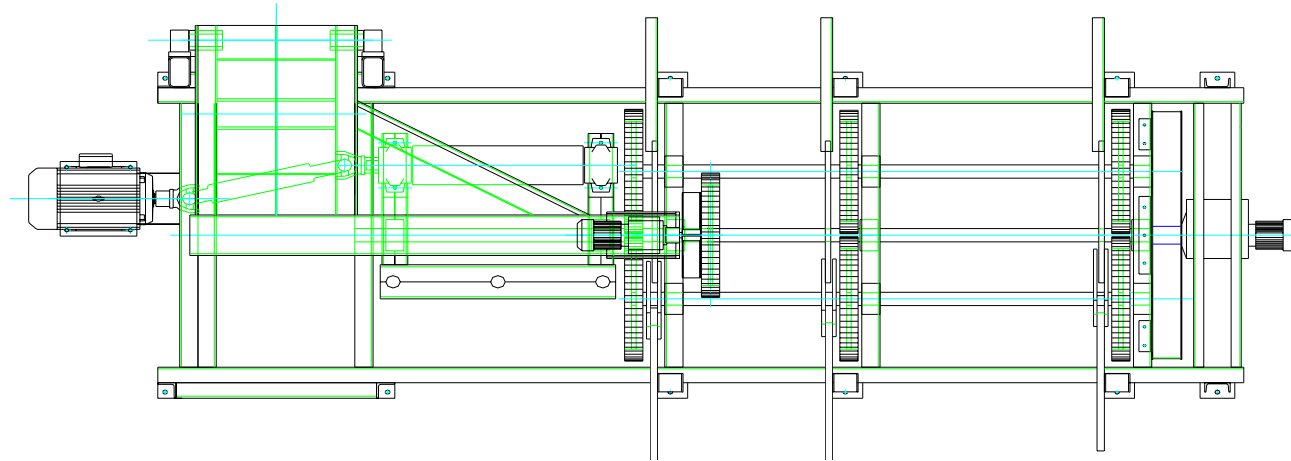


Butt End Equaliser – ME K

(Top view/ Side view)

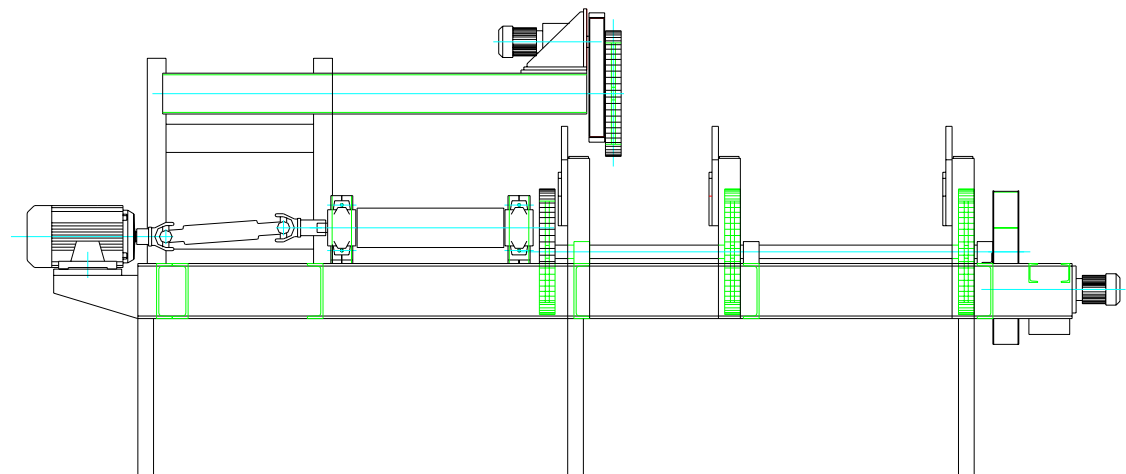


Butt End Equaliser – ME K

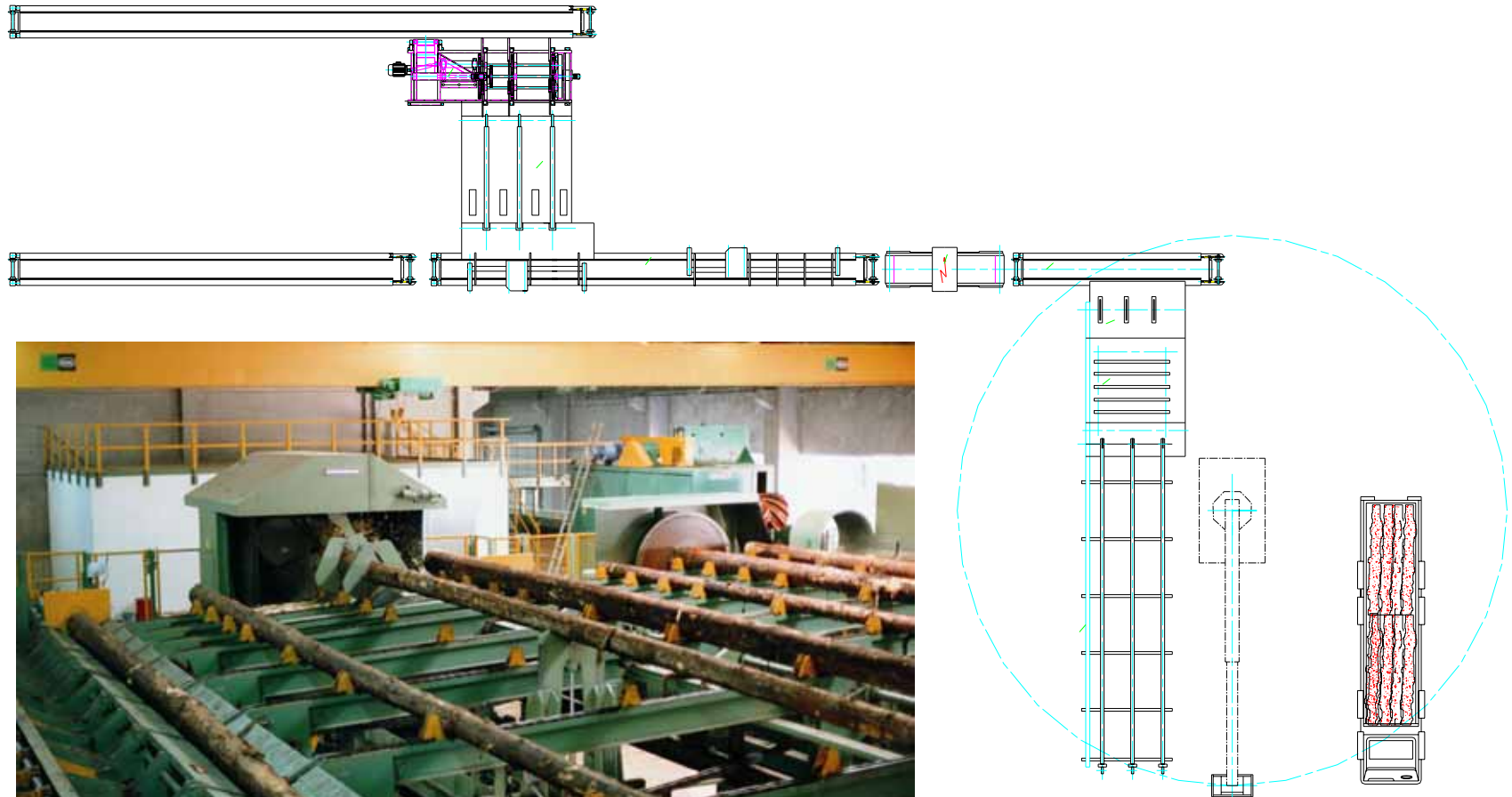


Top View

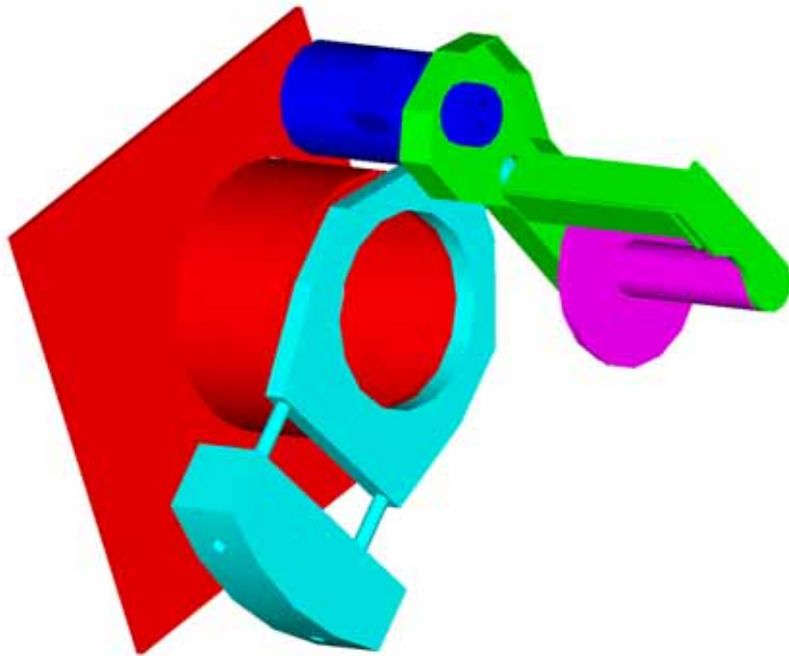
Side View



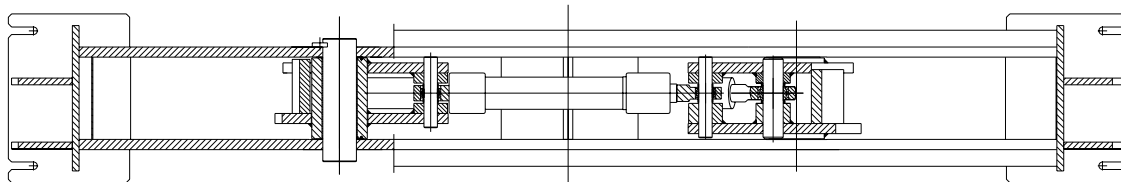
Butt End Equaliser – Possible setting plan



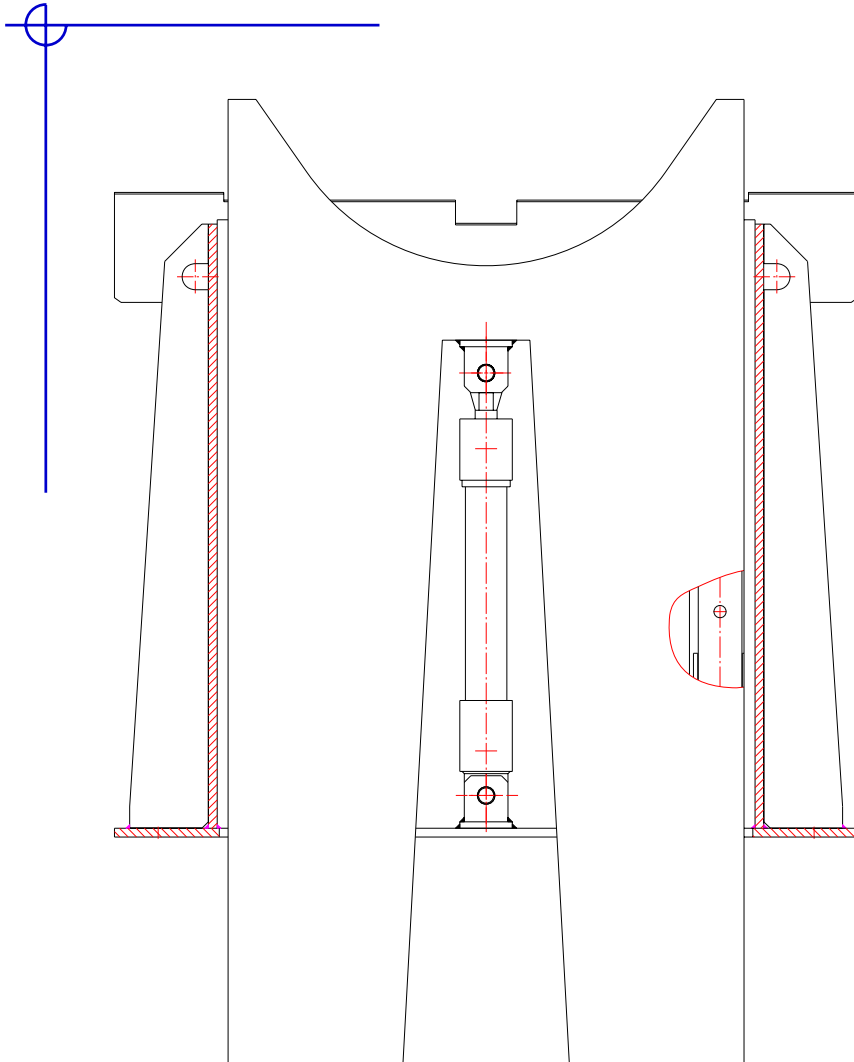
Butt End Equaliser – Cutterhead with counter weight



Butt End Equaliser – Plier



Butt End Equaliser – Hub pillar

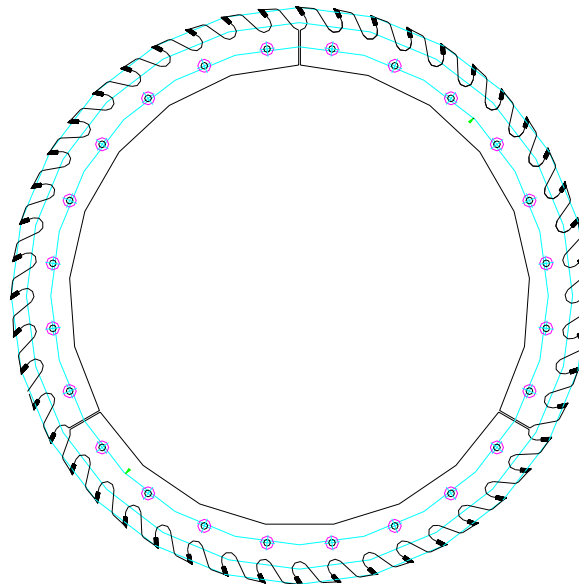


Butt End Equaliser – Cutterhead

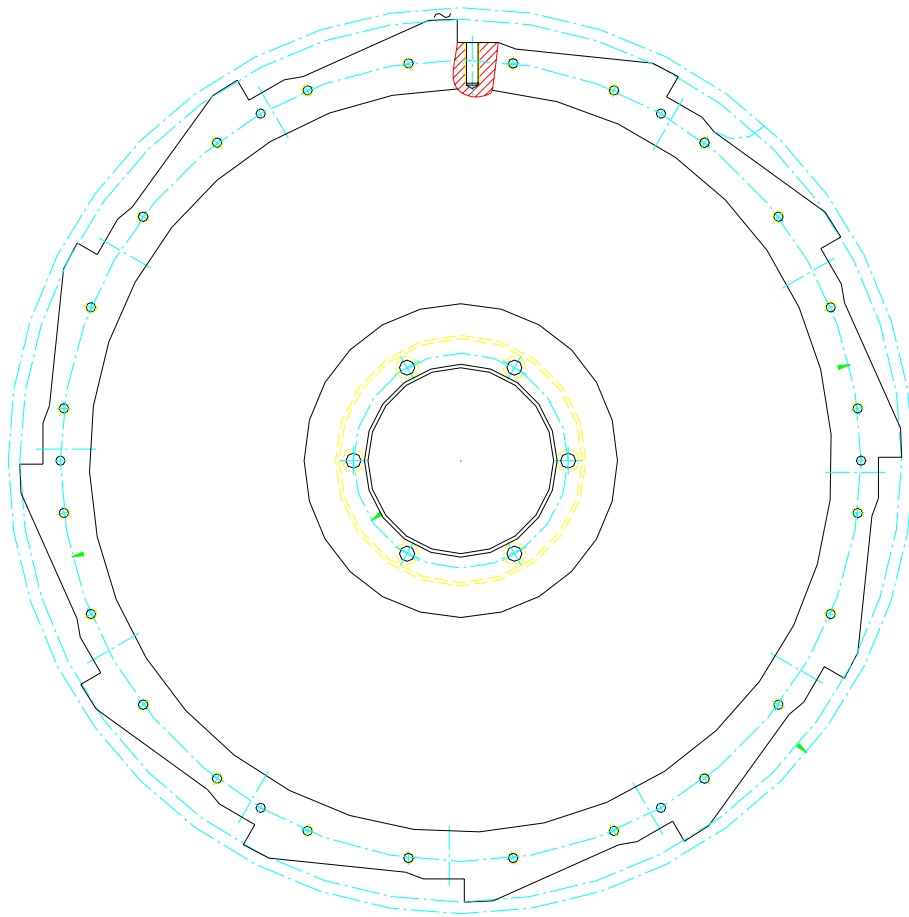


Pressing roll

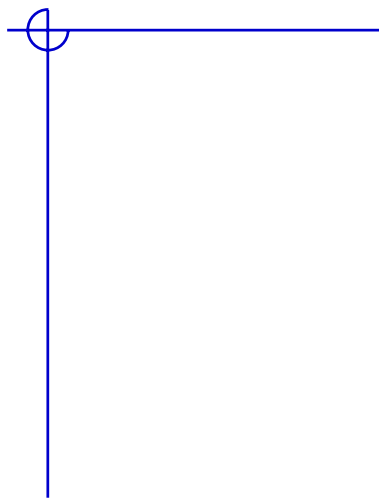
Butt End Equaliser – Sawblade segment



Butt End Equaliser – Cutter disc



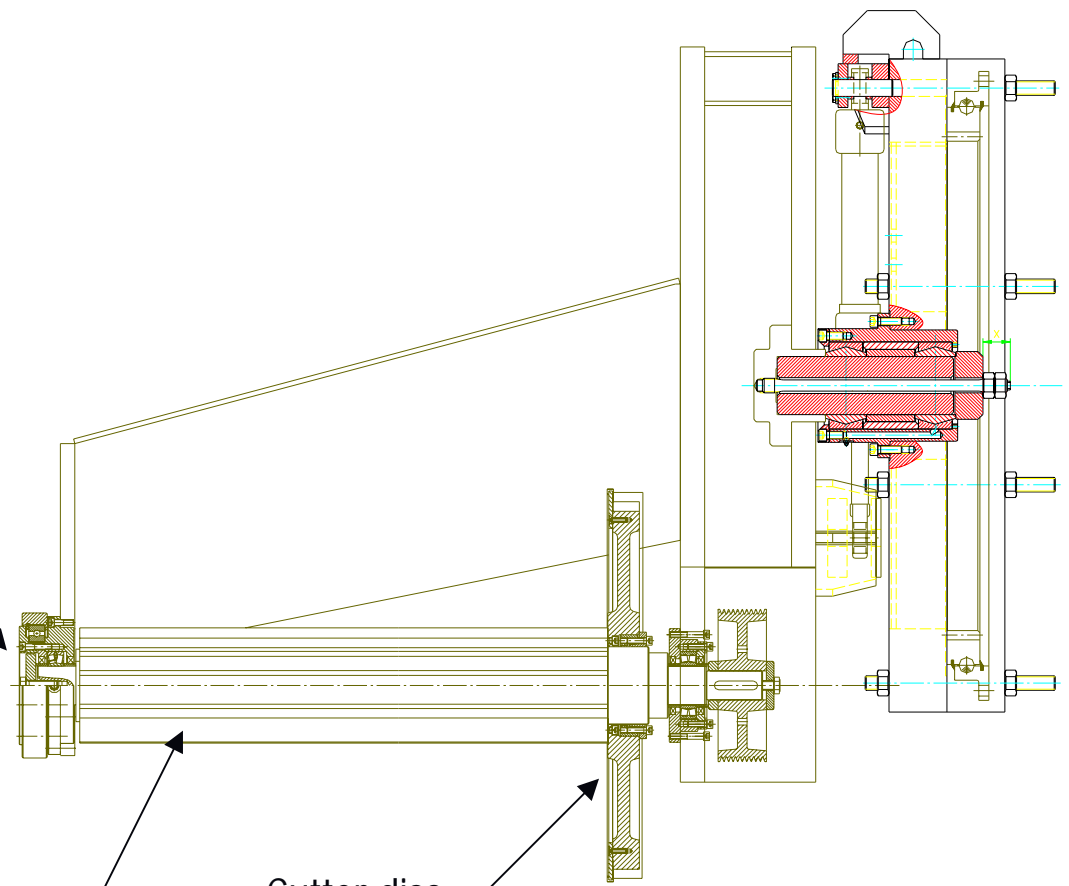
Butt End Equaliser – Milling-head with swing storage



Pressing roll

Cutterhead

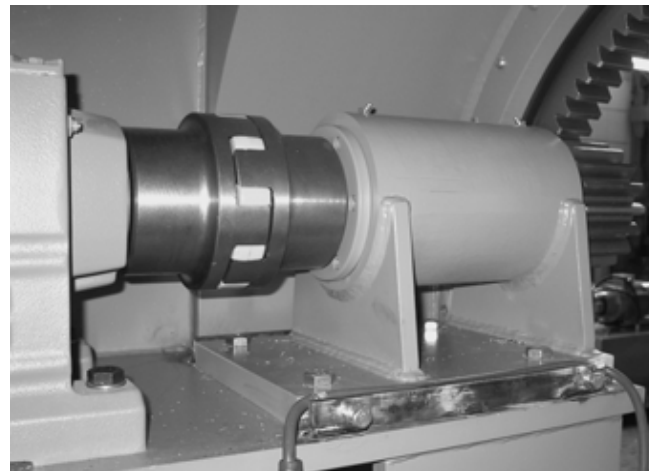
Cutter disc



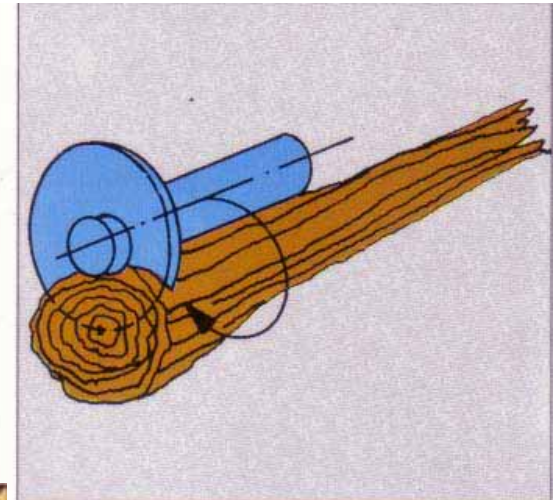
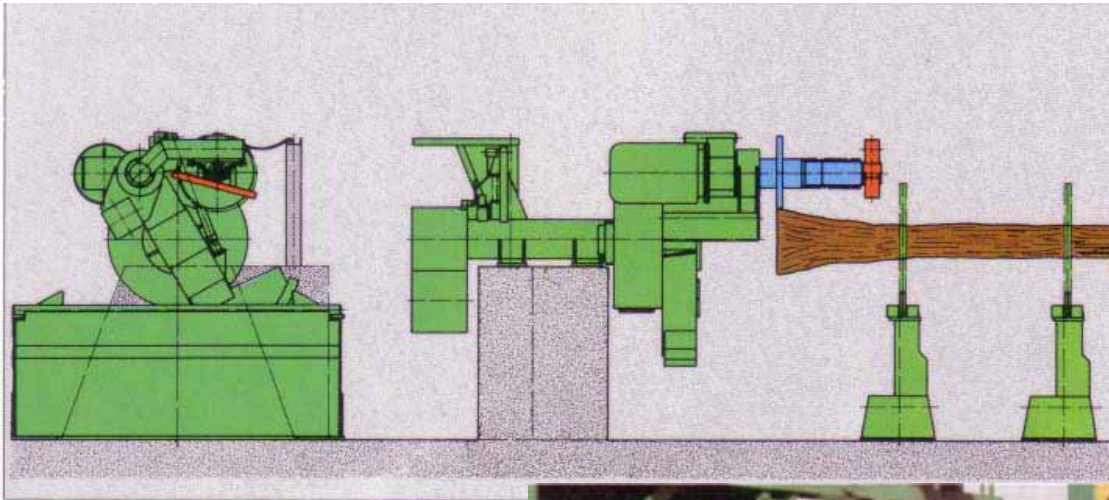
Butt End Equaliser – Drive of cutterhead



Butt End Equaliser – Turn drive



Butt End Equaliser – Manner of working



Butt End Equaliser – Your advantages

- Logs up to a diameter of 1.200 mm
- Inroot beginning a diameter up to 1.400 mm
- Rotating milling shaft with 10° over-cut
- Short meter time
- Up to 5 logs per hour and therefore high capacity
- Equalizes logs of various lengths
- Fast and easy change of saw blade segments

Butt End Equaliser – Your advantages

- Simultaneous reduction and milling (HOMBAK rotating system)
- Integrated cutter disc, Ø 1000 mm
- Moveable flake leading system
- Useful, modern machine navigation with transparent handling tableau and BUS-technology
- Automatic detection of log diameter for optimal meter-handling
- Standstill control of cutter head

Butt End Equaliser – Your advantages

- Modern hydraulic movement with decentralist valve electronic
- Same knives for milling wave and cutter disc
- Turn in knife change platform
- Electronic brake of main motor and therefore short stop-time

Contact

Maschinen- und Anlagenbau GmbH

Ph.: +49 (6 71) 7 07-0

Sandweg 2 – 6

P.O. Box 16 61

Fax: +49 (6 71) 7 07-67

E-Mail: info@hombak.de

D-55543 Bad Kreuznach

D-55506 Bad Kreuznach

Homepage: www.hombak.de