

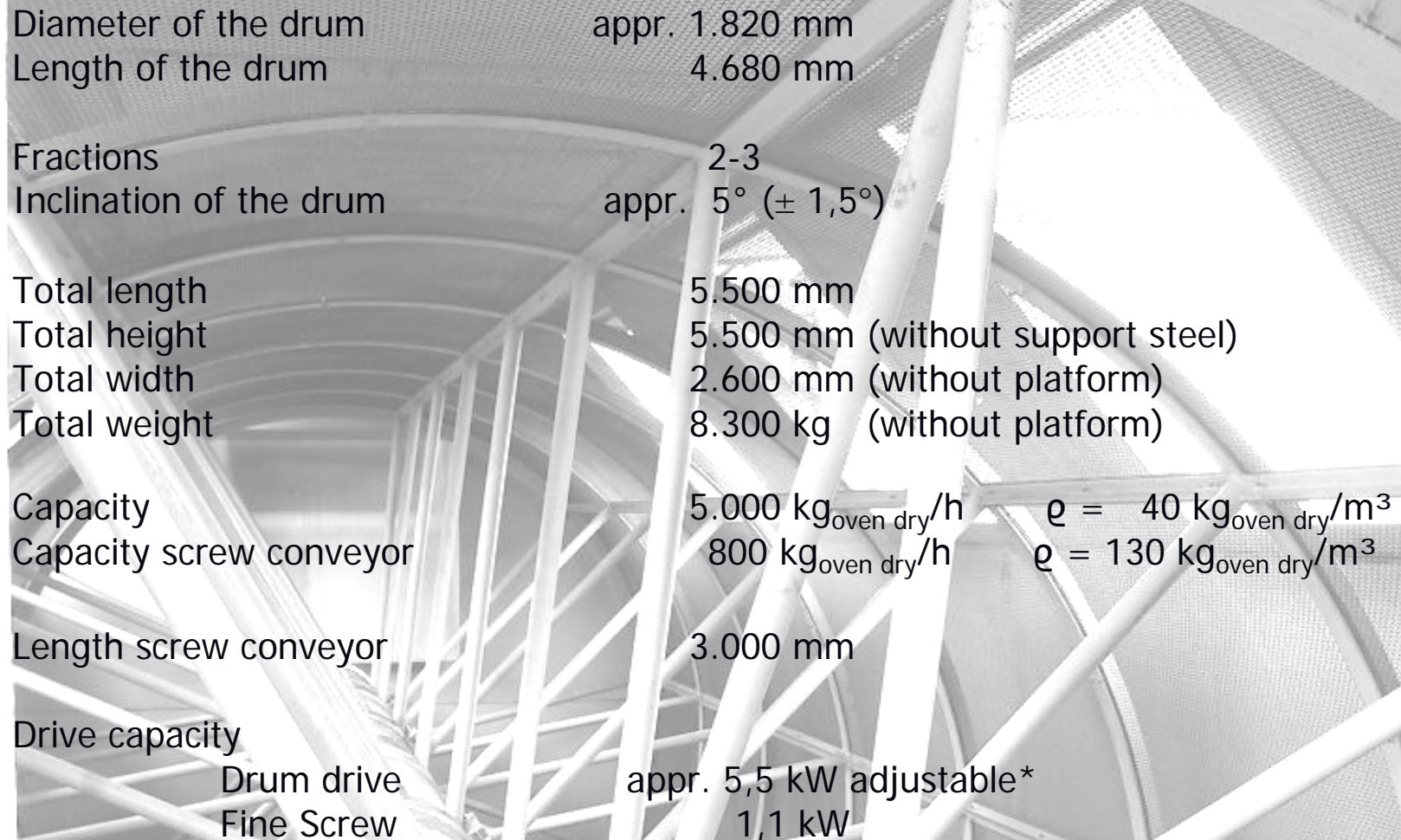
Drum Screens



Drum Screens – Machine versions

Type of machine	Diameter of the drum mm	Length of the drum m	Fractions	Driving power appr. kW	Weight appr. kg	Capacity appr. t _{oven dry} /h
TT 6 x 15	1.820	4.680	2/3	6,6	8.300	5,0
TT 8 x 20	2.450	6.180	2/3	12,1	15.000	8,0
TT 10 x 30	3.050	9.180	2/3	13,2	21.700	12,0
TT 12 x 30	3.650	9.180	2/3	18,2	28.000	17,0
TT 14 x 30	4.250	9.180	2/3	21,5	30.000	25,0
TT 14 x 35	4.250	10.710	2/3	25,0	32.000	30,0

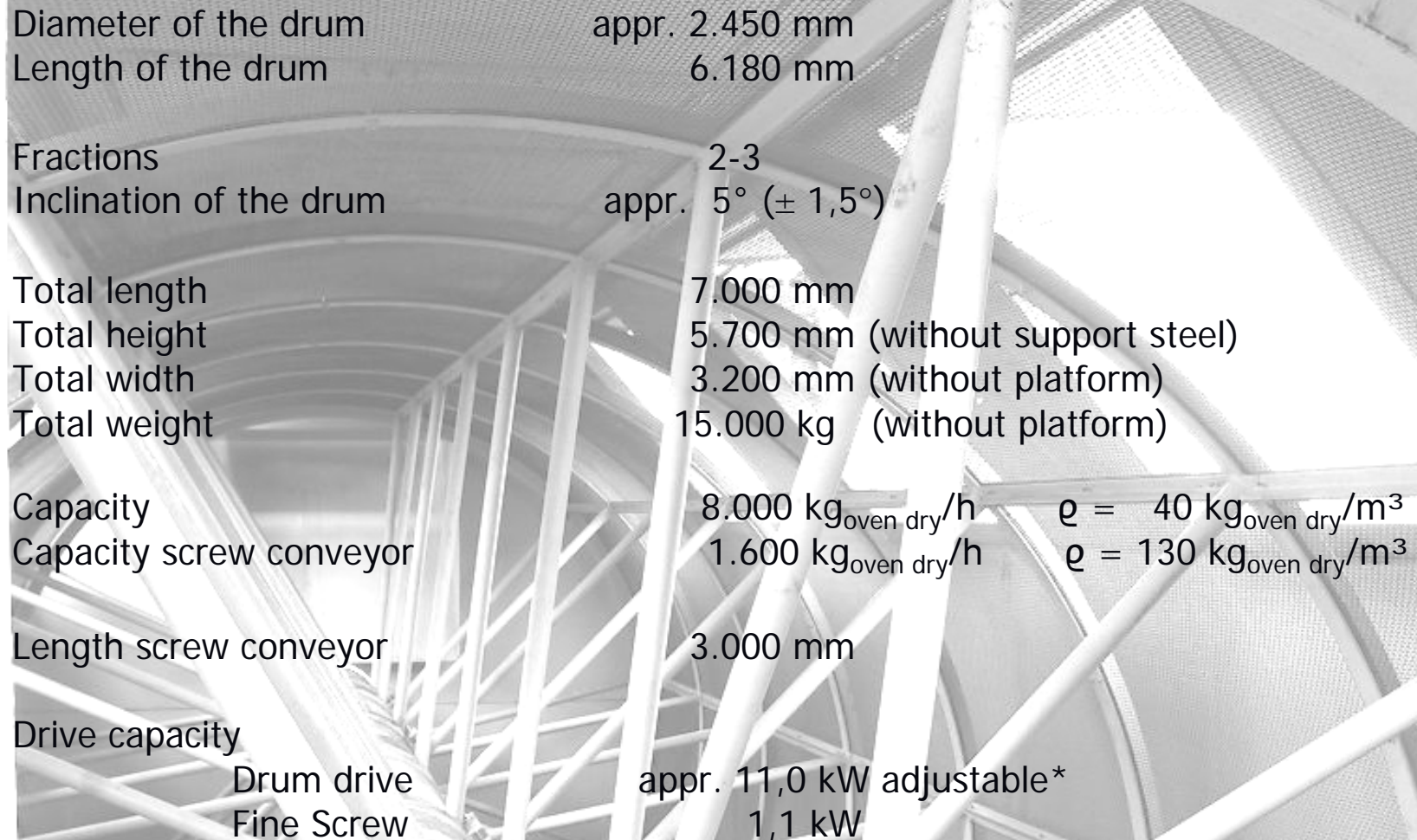
Drum Screens – TT 6 x 15



Diameter of the drum	appr. 1.820 mm	
Length of the drum	4.680 mm	
Fractions	2-3	
Inclination of the drum	appr. 5° (± 1,5°)	
Total length	5.500 mm	
Total height	5.500 mm (without support steel)	
Total width	2.600 mm (without platform)	
Total weight	8.300 kg (without platform)	
Capacity	5.000 kg _{oven dry} /h	$\rho = 40 \text{ kg}_{\text{oven dry}}/\text{m}^3$
Capacity screw conveyor	800 kg _{oven dry} /h	$\rho = 130 \text{ kg}_{\text{oven dry}}/\text{m}^3$
Length screw conveyor	3.000 mm	
Drive capacity		
Drum drive	appr. 5,5 kW adjustable*	
Fine Screw	1,1 kW	

* Frequency converter on site

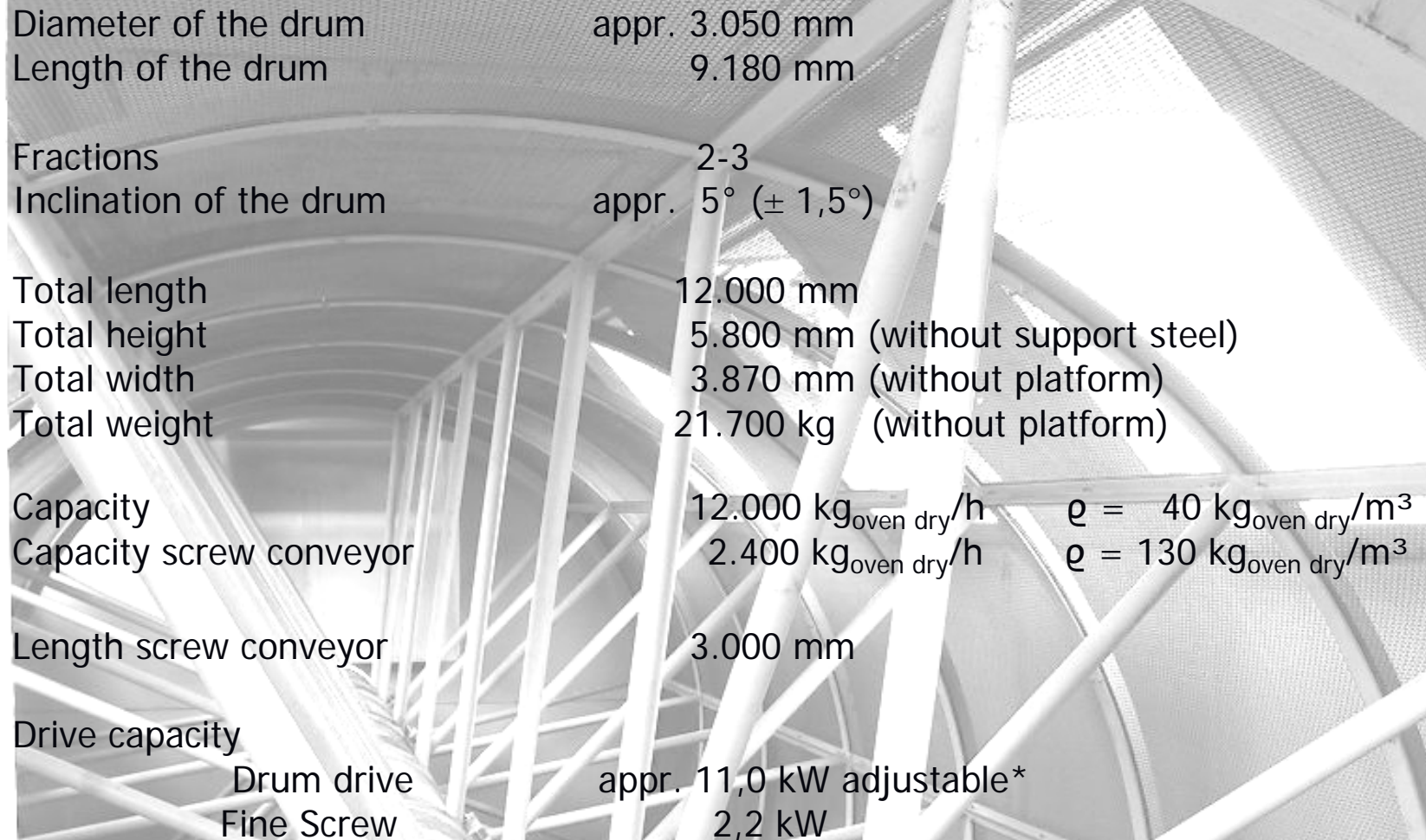
Drum Screens – TT 8 x 20



Diameter of the drum	appr. 2.450 mm	
Length of the drum	6.180 mm	
Fractions	2-3	
Inclination of the drum	appr. 5° (± 1,5°)	
Total length	7.000 mm	
Total height	5.700 mm (without support steel)	
Total width	3.200 mm (without platform)	
Total weight	15.000 kg (without platform)	
Capacity	8.000 kg _{oven dry} /h	$\rho = 40 \text{ kg}_{\text{oven dry}}/\text{m}^3$
Capacity screw conveyor	1.600 kg _{oven dry} /h	$\rho = 130 \text{ kg}_{\text{oven dry}}/\text{m}^3$
Length screw conveyor	3.000 mm	
Drive capacity		
Drum drive	appr. 11,0 kW adjustable*	
Fine Screw	1,1 kW	

* Frequency converter on site

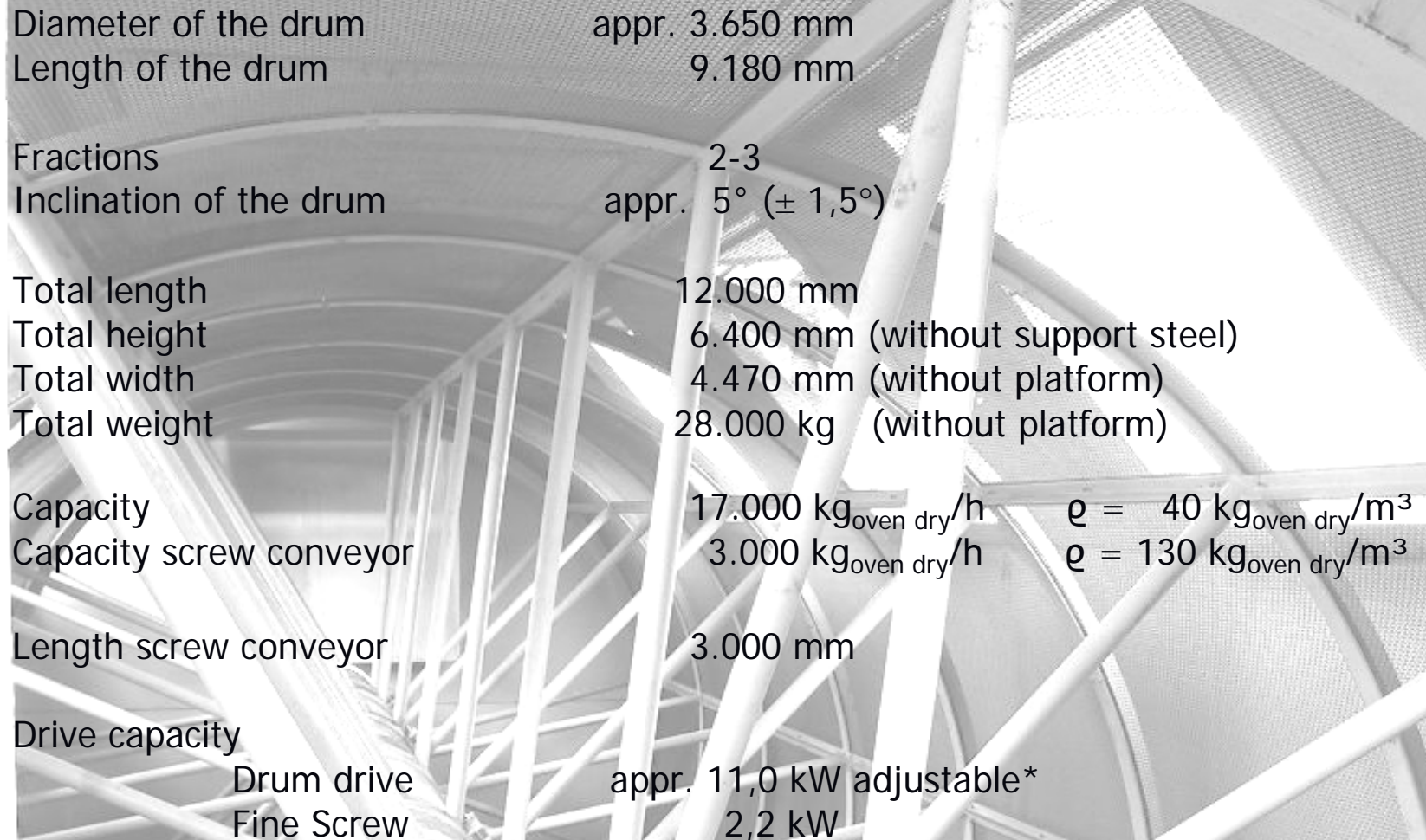
Drum Screens – TT 10 x 30



Diameter of the drum	appr. 3.050 mm	
Length of the drum	9.180 mm	
Fractions	2-3	
Inclination of the drum	appr. 5° (± 1,5°)	
Total length	12.000 mm	
Total height	5.800 mm (without support steel)	
Total width	3.870 mm (without platform)	
Total weight	21.700 kg (without platform)	
Capacity	12.000 kg _{oven dry} /h	$\rho = 40 \text{ kg}_{\text{oven dry}}/\text{m}^3$
Capacity screw conveyor	2.400 kg _{oven dry} /h	$\rho = 130 \text{ kg}_{\text{oven dry}}/\text{m}^3$
Length screw conveyor	3.000 mm	
Drive capacity		
Drum drive	appr. 11,0 kW adjustable*	
Fine Screw	2,2 kW	

* Frequency converter on site

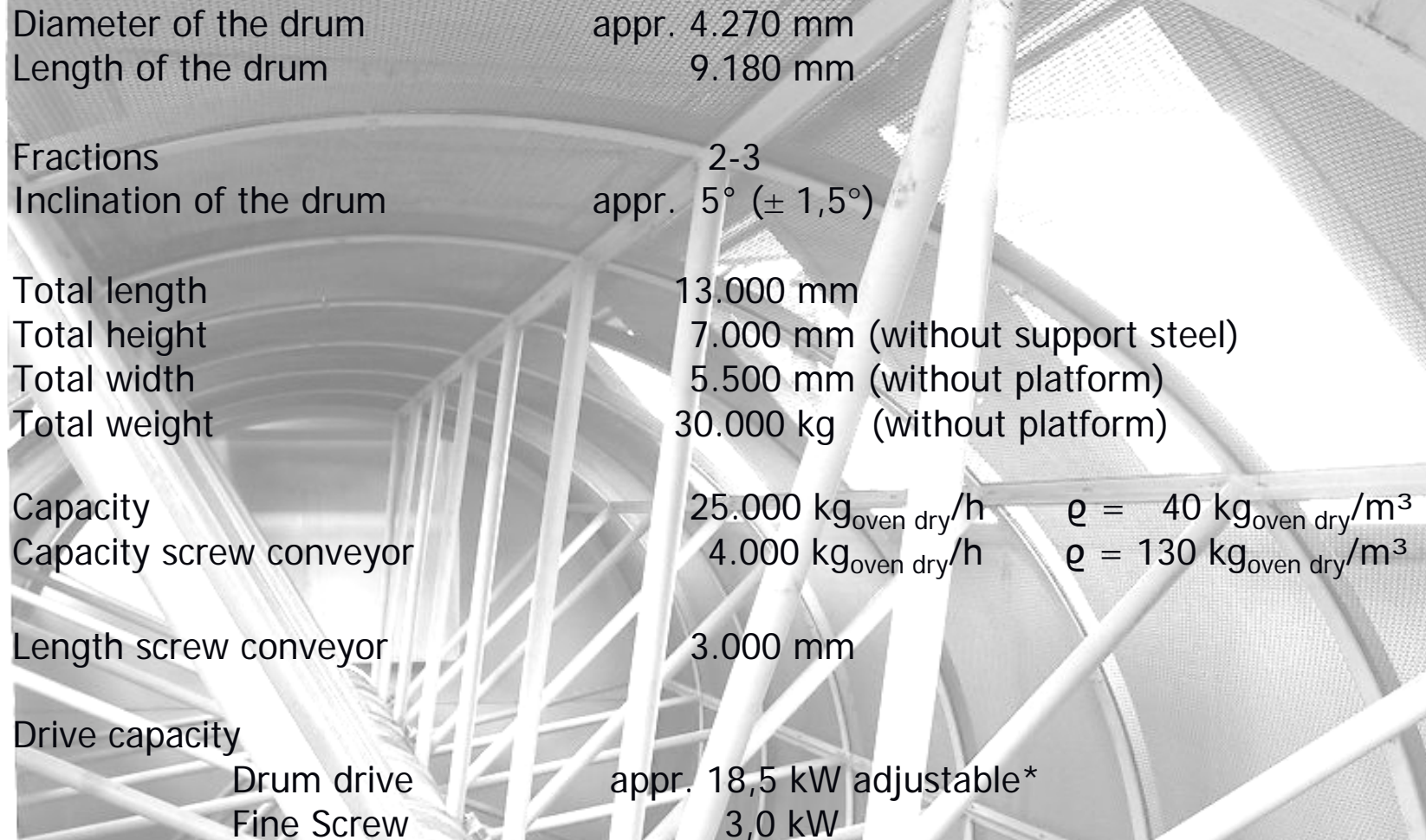
Drum Screens – TT 12 x 30



Diameter of the drum	appr. 3.650 mm	
Length of the drum	9.180 mm	
Fractions	2-3	
Inclination of the drum	appr. 5° (± 1,5°)	
Total length	12.000 mm	
Total height	6.400 mm (without support steel)	
Total width	4.470 mm (without platform)	
Total weight	28.000 kg (without platform)	
Capacity	17.000 kg _{oven dry} /h	$\rho = 40 \text{ kg}_{\text{oven dry}}/\text{m}^3$
Capacity screw conveyor	3.000 kg _{oven dry} /h	$\rho = 130 \text{ kg}_{\text{oven dry}}/\text{m}^3$
Length screw conveyor	3.000 mm	
Drive capacity		
Drum drive	appr. 11,0 kW adjustable*	
Fine Screw	2,2 kW	

* Frequency converter on site

Drum Screens – TT 14 x 30



Diameter of the drum	appr. 4.270 mm	
Length of the drum	9.180 mm	
Fractions	2-3	
Inclination of the drum	appr. 5° (± 1,5°)	
Total length	13.000 mm	
Total height	7.000 mm (without support steel)	
Total width	5.500 mm (without platform)	
Total weight	30.000 kg (without platform)	
Capacity	25.000 kg _{oven dry} /h	$\rho = 40 \text{ kg}_{\text{oven dry}}/\text{m}^3$
Capacity screw conveyor	4.000 kg _{oven dry} /h	$\rho = 130 \text{ kg}_{\text{oven dry}}/\text{m}^3$
Length screw conveyor	3.000 mm	
Drive capacity		
Drum drive	appr. 18,5 kW adjustable*	
Fine Screw	3,0 kW	

* Frequency converter on site

Drum Screens – TT 14 x 35



Diameter of the drum	appr. 4.270 mm	
Length of the drum	10.710 mm	
Fractions	2-3	
Inclination of the drum	appr. 5° (± 1,5°)	
Total length	14.500 mm	
Total height	7.000 mm (without support steel)	
Total width	5.500 mm (without platform)	
Total weight	32.000 kg (without platform)	
Capacity	30.000 kg _{oven dry} /h	$\rho = 40 \text{ kg}_{\text{oven dry}}/\text{m}^3$
Capacity screw conveyor	5.000 kg _{oven dry} /h	$\rho = 130 \text{ kg}_{\text{oven dry}}/\text{m}^3$
Length screw conveyor	3.000 mm	
Drive capacity		
Drum drive	appr. 22,0 kW adjustable*	
Fine Screw	3,0 kW	

* Frequency converter on site

Drum Screens – Feeding material



Chips



Sawdust



Flakes



Strands

**Efficient and exact separation of the material destined
for the deck- and core layer**



- Excessive raw material usage
- Decreasing usage of glue
- Separation of the material into the required fractions



High potential of cost reduction

Drum Screens – OSB-Screening



Face



Core

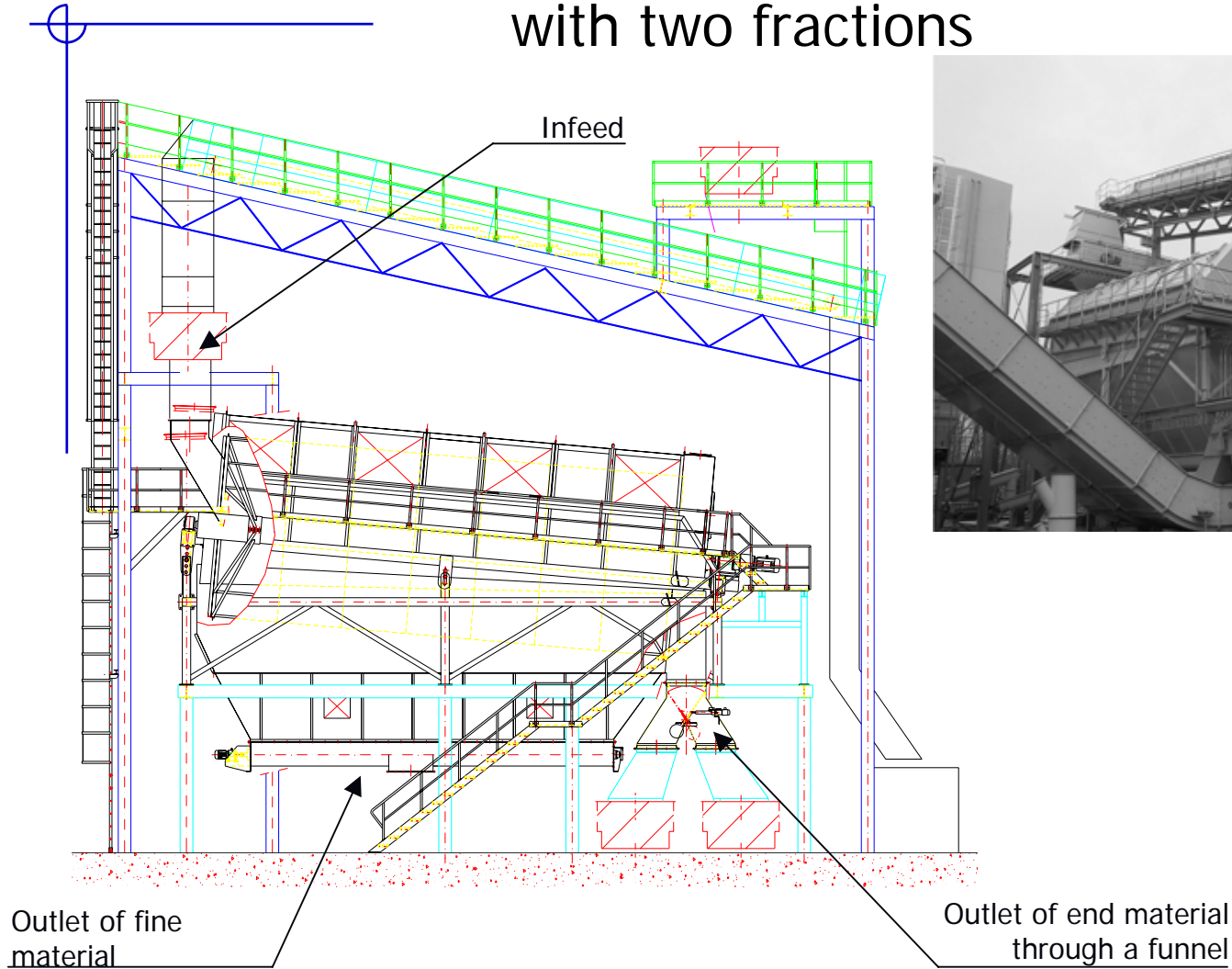


Fines

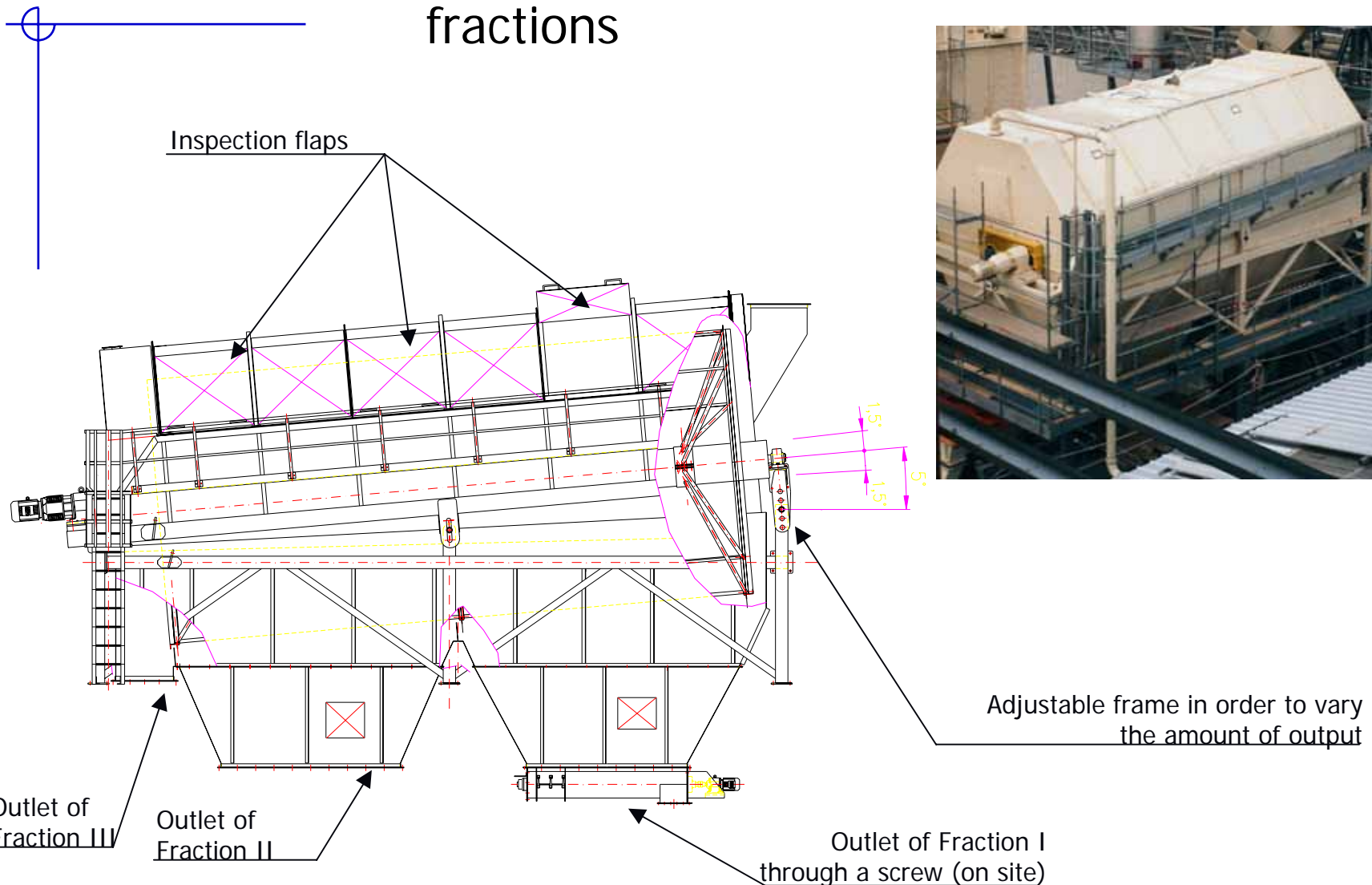


**Very efficient and precise screening into fines,
face- and core-layer strands**

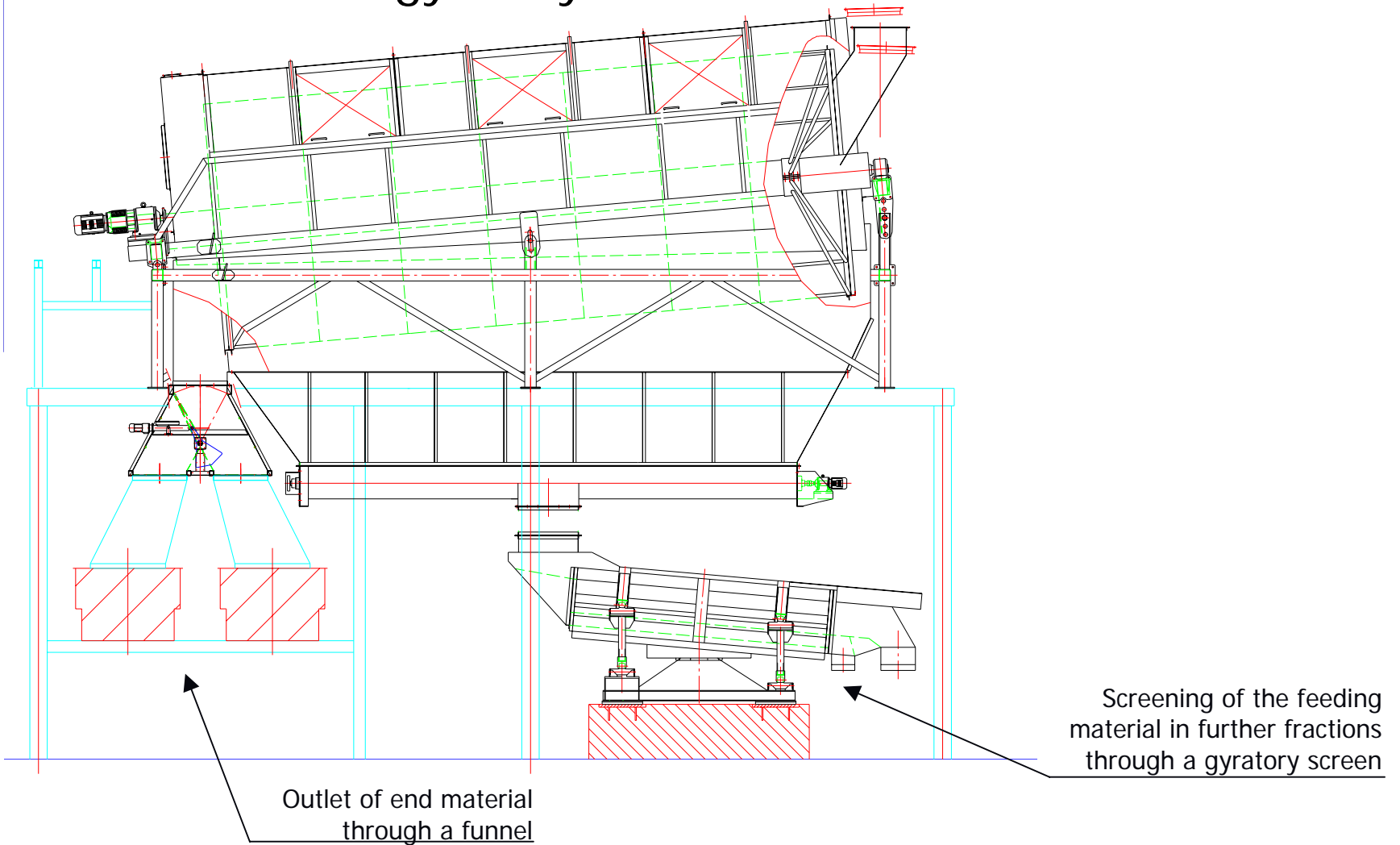
Drum Screens – Example of an installation with two fractions



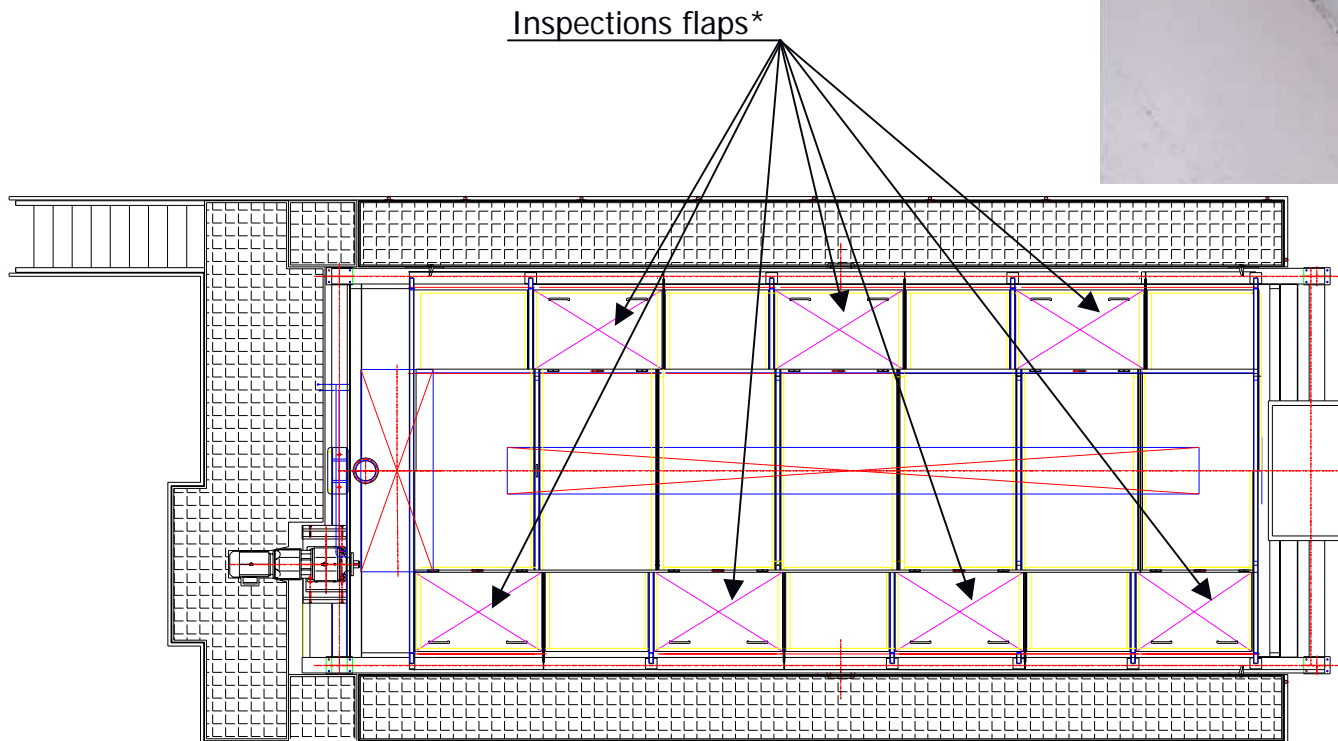
Drum Screens – Front view with three fractions



Drum Screens – Screening with following gyratory screen

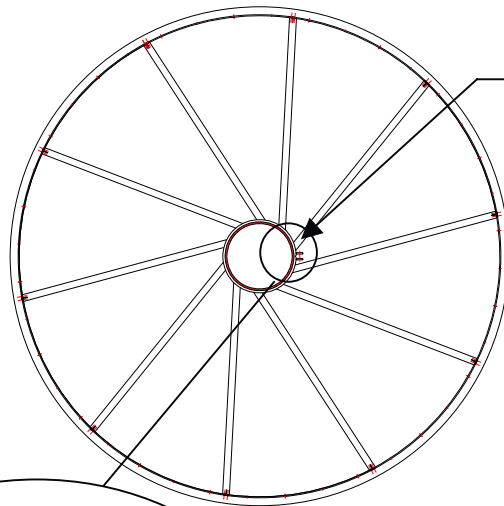


Drum Screens – Top view

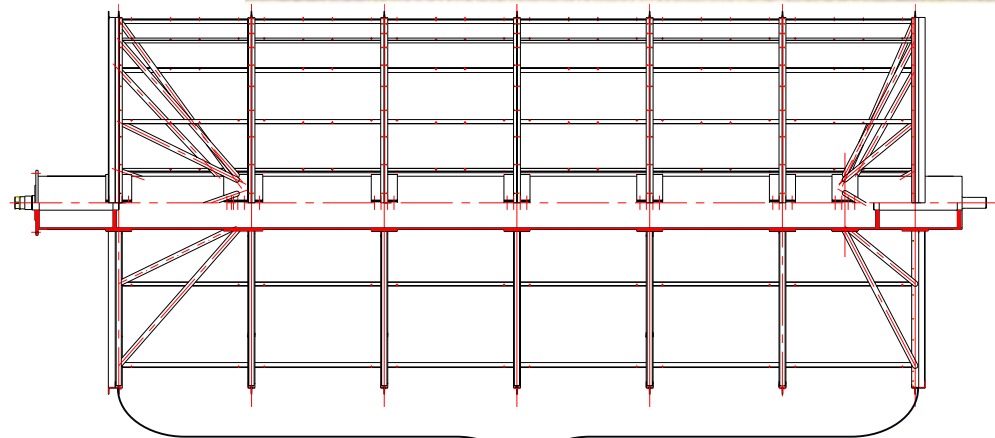
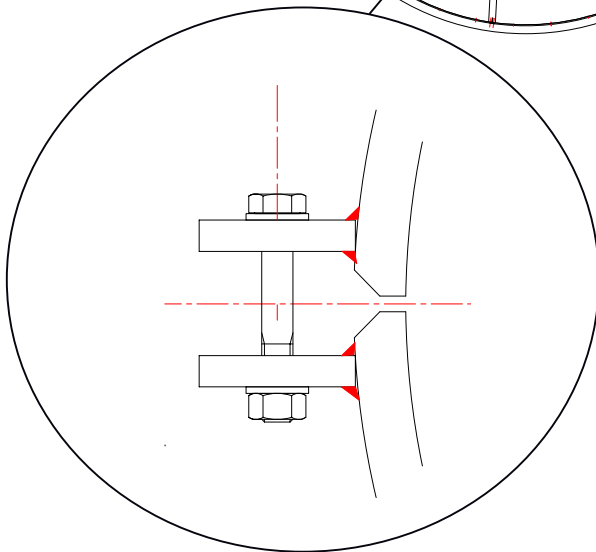


*Number of flaps depends on the type of the drum

Drum Screens – Construction of the screening drum

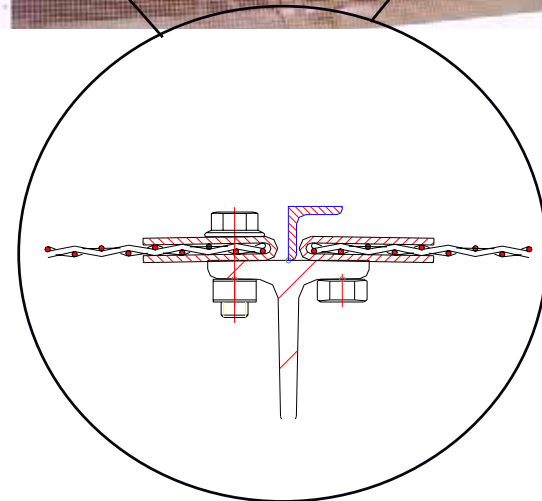
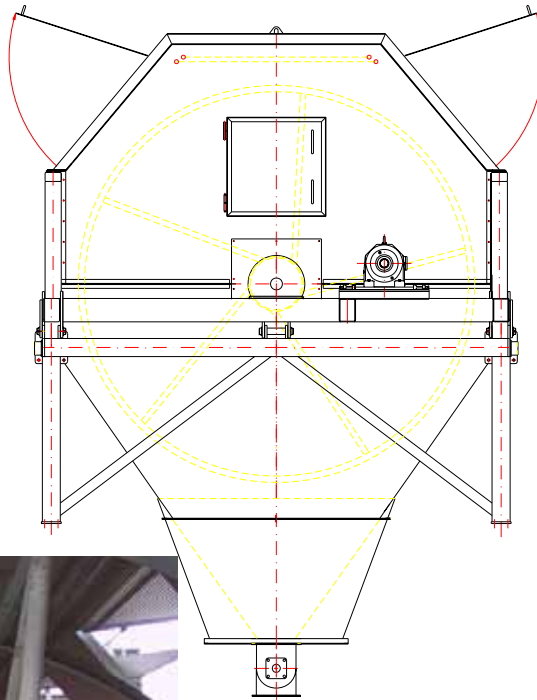


Tubes clamped
on the shaft

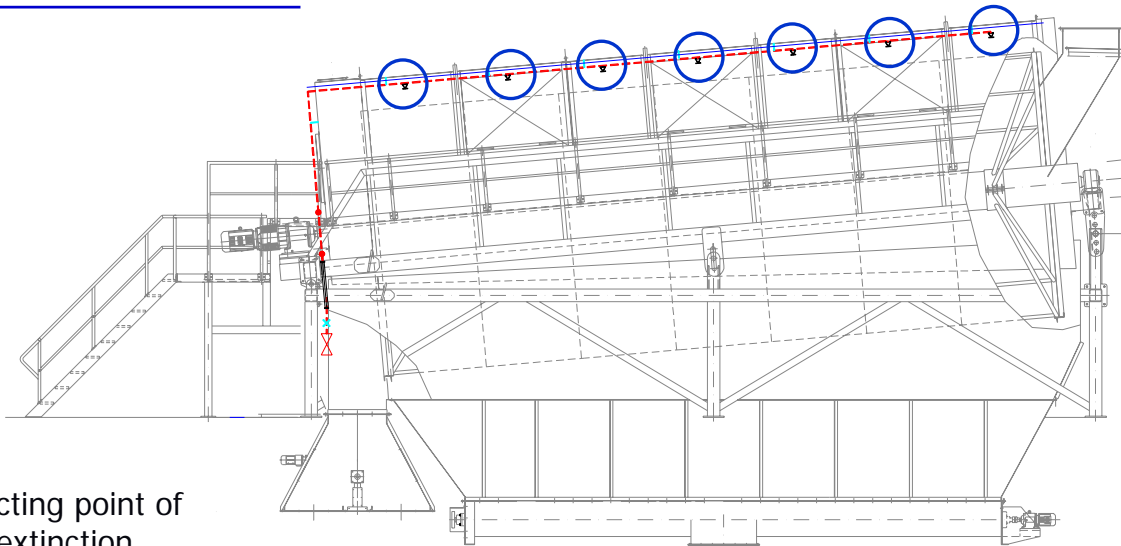


Sections with screening elements

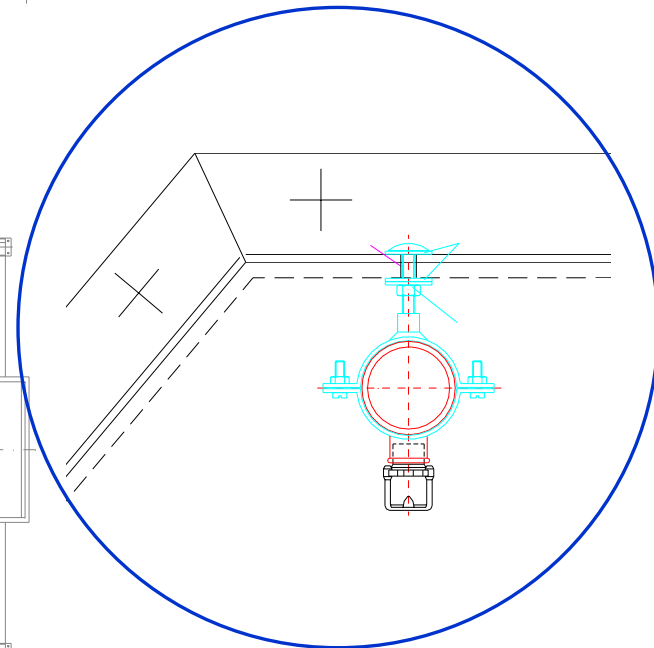
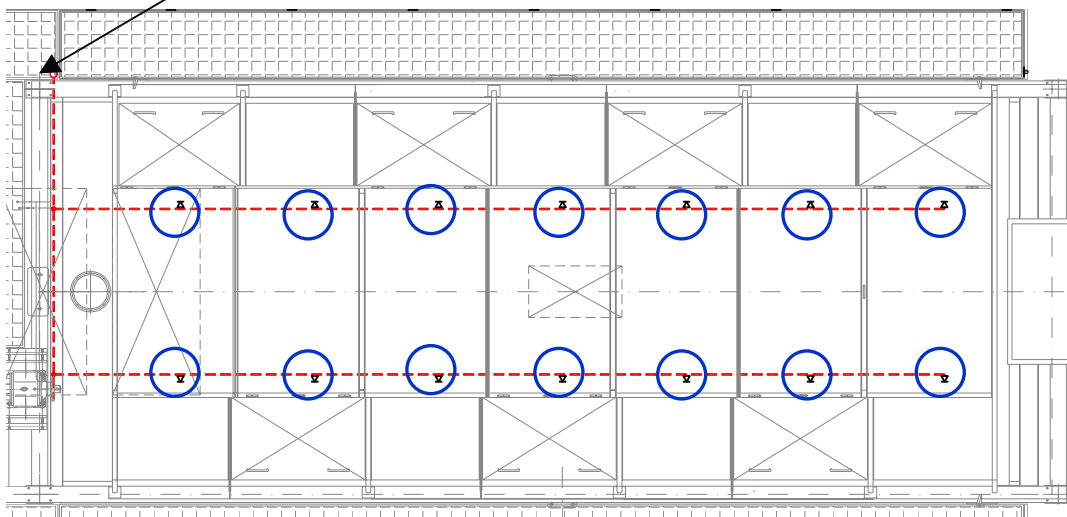
Drum Screens – Easy changeable screening frames



Drum Screens – Extinction facility



Connecting point of
water extinction



Drum Screens – Modell



Drum Screens – Advantages in screening

- Decreasing **usage of glue**
- **Optimal utilization** of the resources
- **No fines** in the layer and **homogenous edges**
- Careful dealing with the material result in an optimal use of the wood characteristics and therefore to an **increased bending strength**
- **Lower fire risk** in the dryer because of minimal fine share
- **Increasing dryer capacity**

Drum Screens – Advantages of our screeners

- Careful **screening** in up to three fractions. Further fractions easily expandable through a gyratory screen
- More than **800 m³/h** (depends on the density and humidity) and therefore almost double productivity in comparison to other screening types
- **No personal** required during operation
- **Optimized rotating speed** of the screen results in neither to jam in the screen nor to generate higher fines proportions
- **Efficient separation** of the material into the fractions desired by the client
- Very **large screening area**
- **Dust proof construction**

Drum Screens – Advantages of our screeners

- Adjustable inclination of the screen for optimal **adjustment to production conditions**
- **Robust steel construction** and long-standing experience in screening lead to a long lifetime of the screen
- Easy **changeable screening frames** with different mesh sizes for optimal, clients individual desire
- **Low energy** consumption
- Only **small footprint** required and suitable for **open air use**
- **Self-cleaning effect** through enlarged drum
- **Low maintenance costs**

Contact

Maschinen- und Anlagenbau GmbH

Ph.: +49 (6 71) 7 07-0

Sandweg 2 – 6

P.O. Box 16 61

Fax: +49 (6 71) 7 07-67

E-Mail: info@hombak.de

D-55543 Bad Kreuznach

D-55506 Bad Kreuznach

Homepage: www.hombak.de